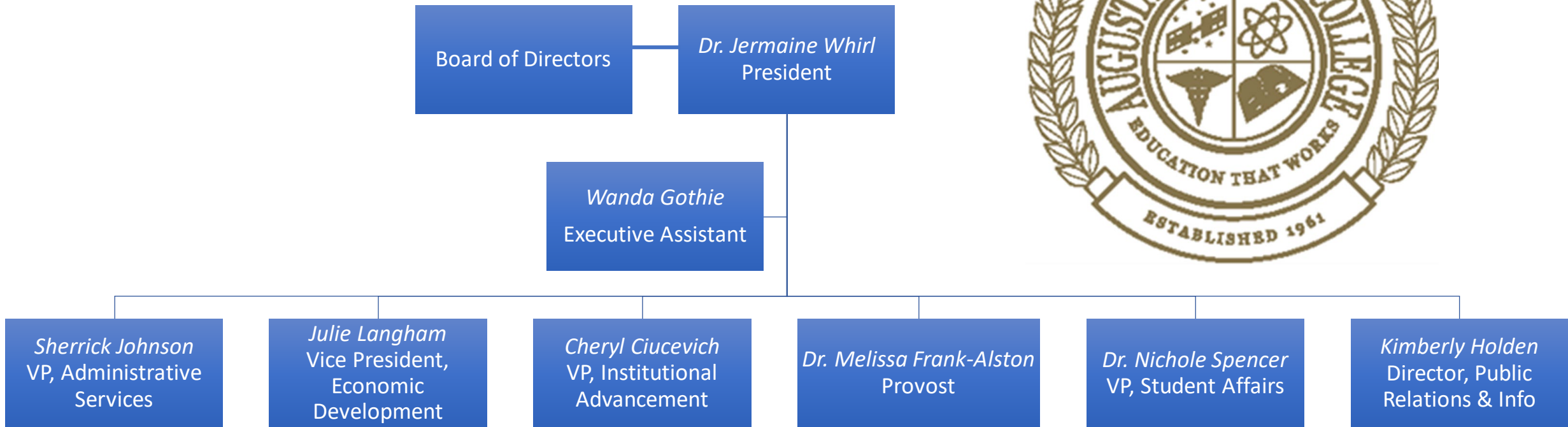


# Office of the President

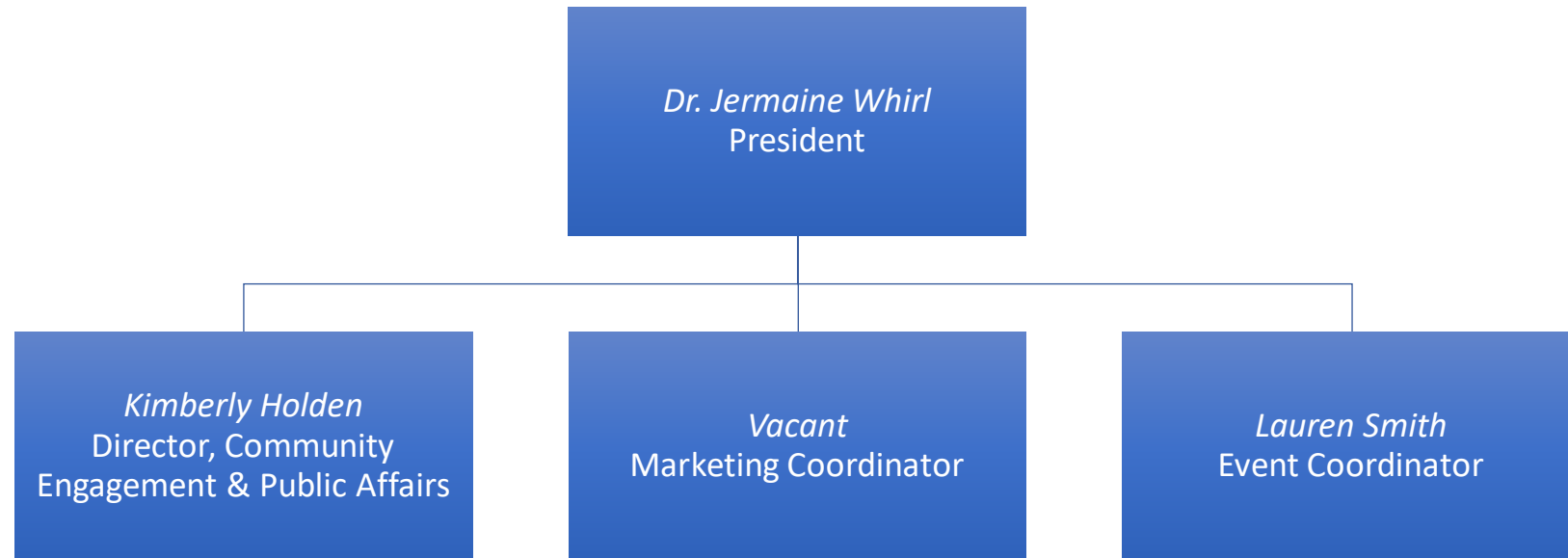
Updated May 5, 2023



This document is a graphic representation of the information for the Office of the President. If you need this document in an accessible format, please see the [Accessible Organizational Chart](#).

# Community Engagement and Public Affairs

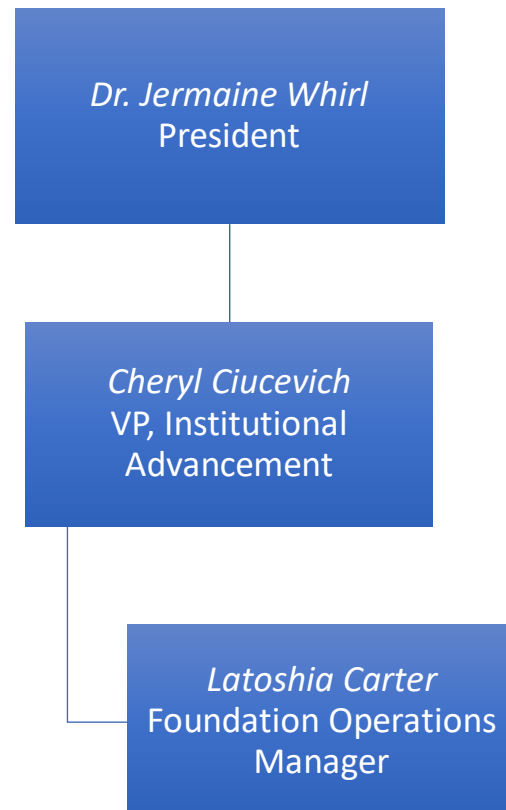
*Updated July 26, 2023*



This document is a graphic representation of the information for the Office of the President. If you need this document in an accessible format, please see the [Accessible Organizational Chart](#).

# Institutional Advancement

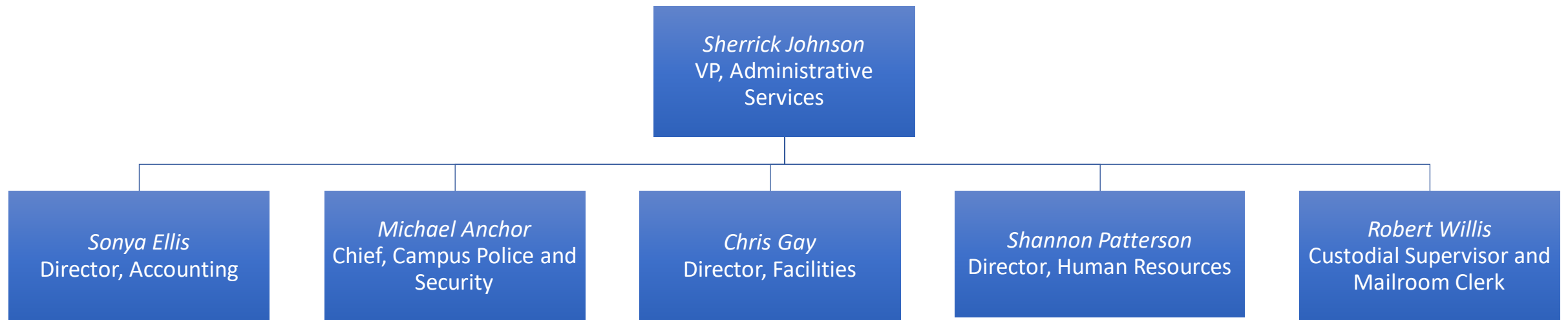
*Updated April 14, 2023*



This document is a graphic representation of the information for the Office of the President. If you need this document in an accessible format, please see the [Accessible Organizational Chart](#).

# Administrative Services

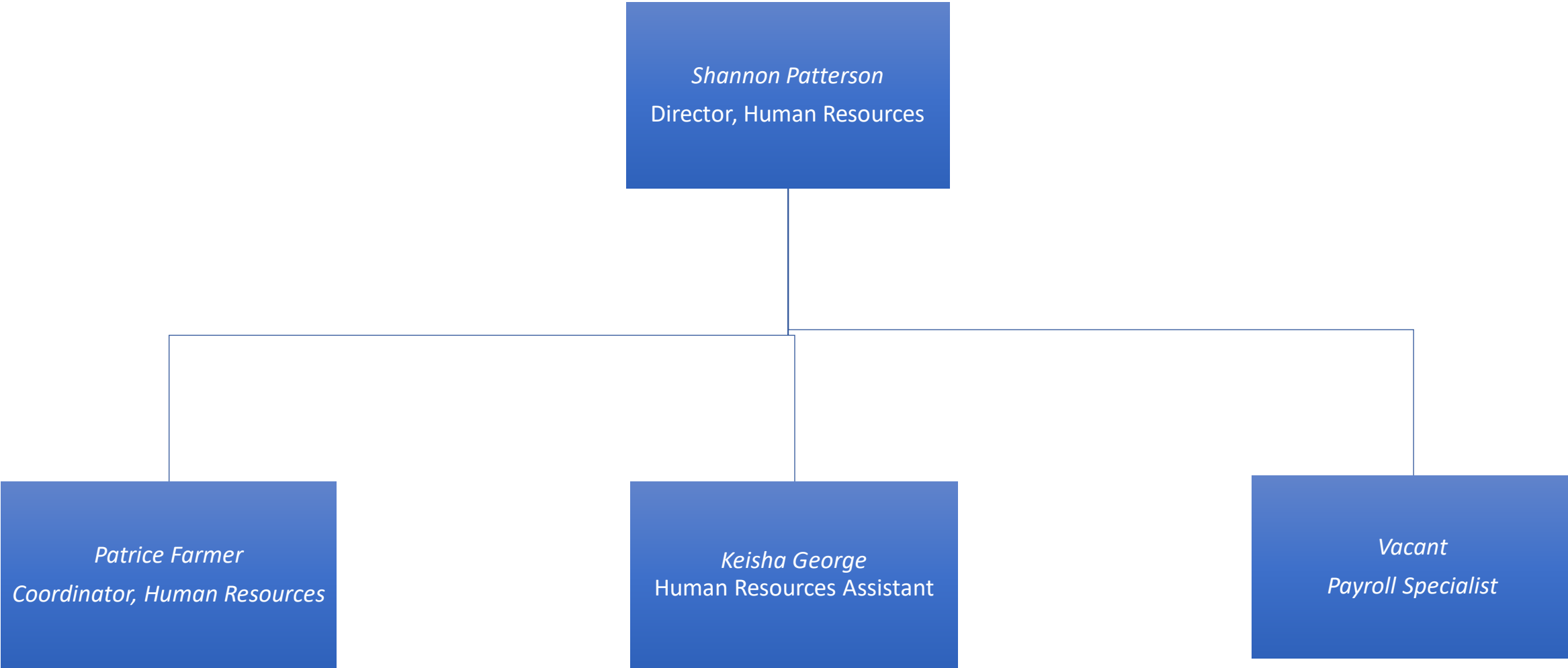
*Updated December 1, 2022*



This document is a graphic representation of the information for the Office of Administrative Services. If you need this document in an accessible format, please see the [Accessible Organizational Chart](#).

# Human Resources

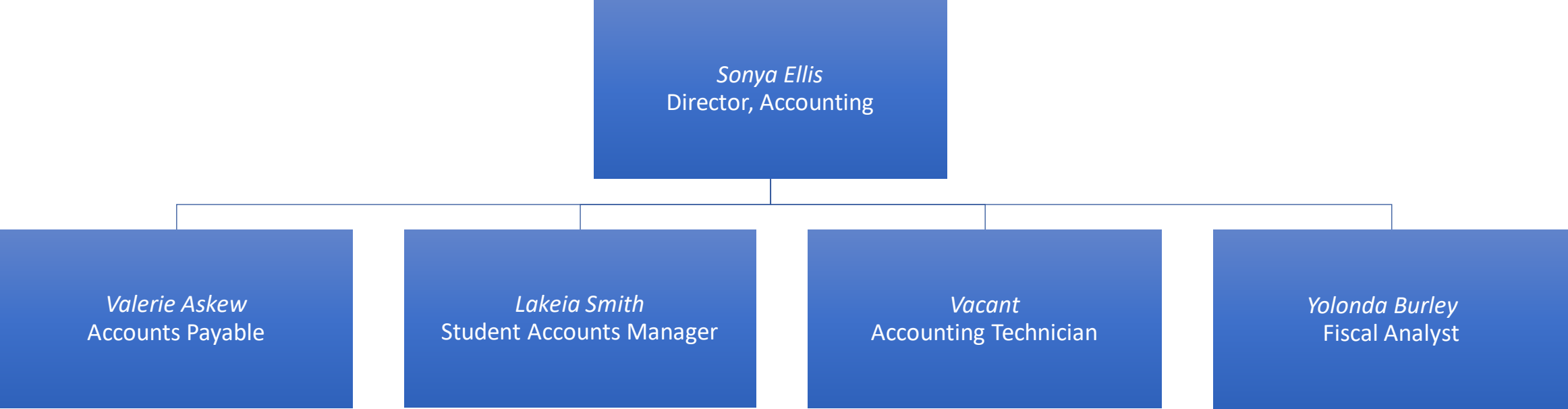
Updated November 11, 2021



This document is a graphic representation of the information for the Office of Human Resources. If you need this document in an accessible format, please see the [Accessible Organizational Chart](#).

# Accounting/Business Office

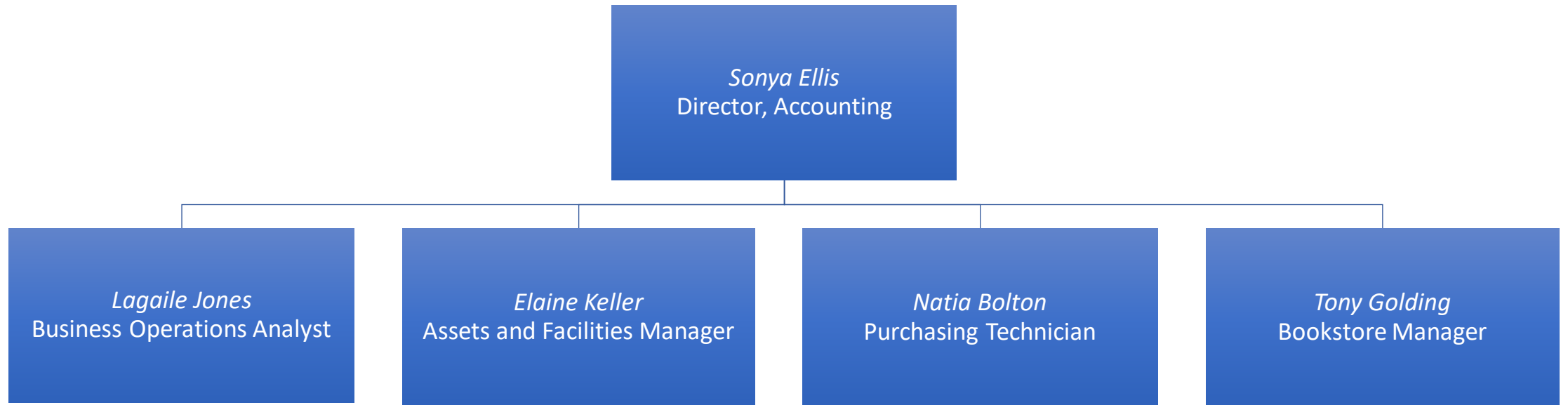
Updated April 14, 2023



This document is a graphic representation of the information for the Office of Accounting/Business Office. If you need this document in an accessible format, please see the [Accessible Organizational Chart](#).

# Accounting/Business Office

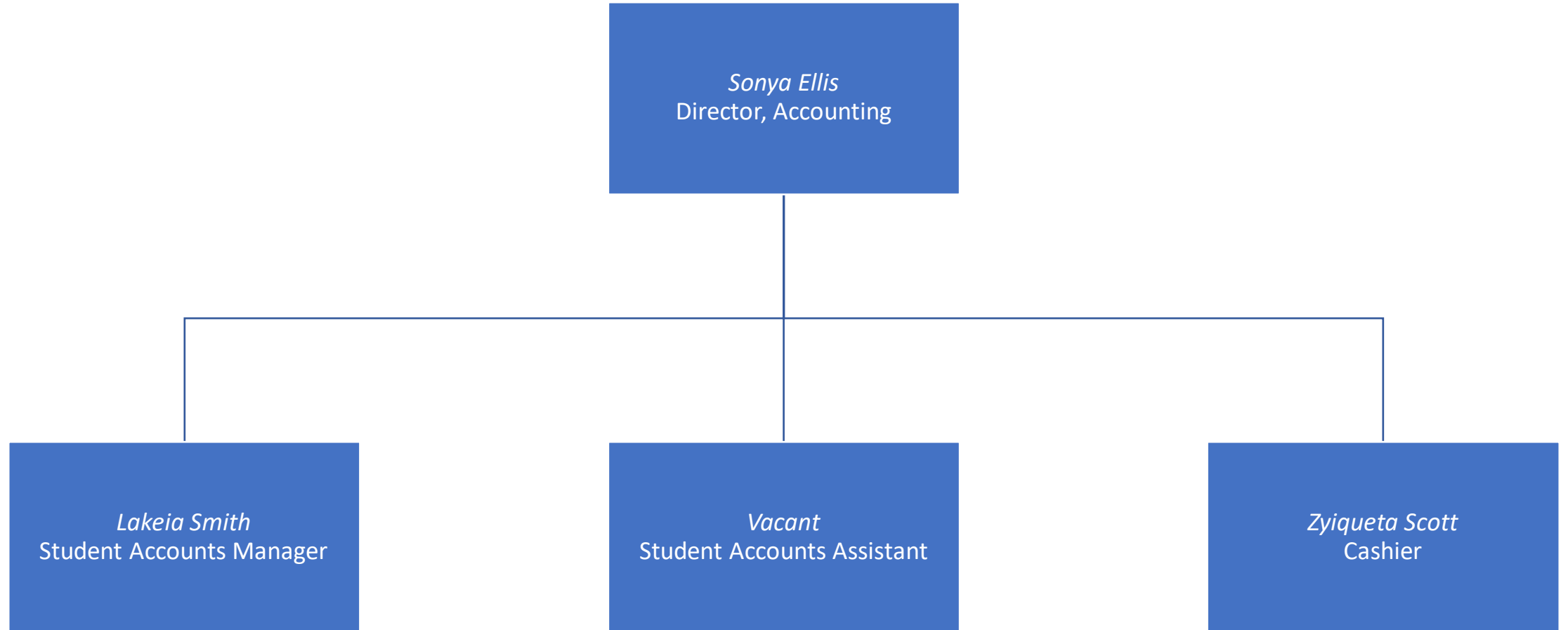
*Updated May 5, 2022*



This document is a graphic representation of the information for the Office Accounting/Business Office. If you need this document in an accessible format, please see the [Accessible Organizational Chart](#).

# Student Accounts

*Updated May 5, 2023*



This document is a graphic representation of the information for the Office of Student Accounts. If you need this document in an accessible format, please see the [Accessible Organizational Chart](#).



# Campus Store

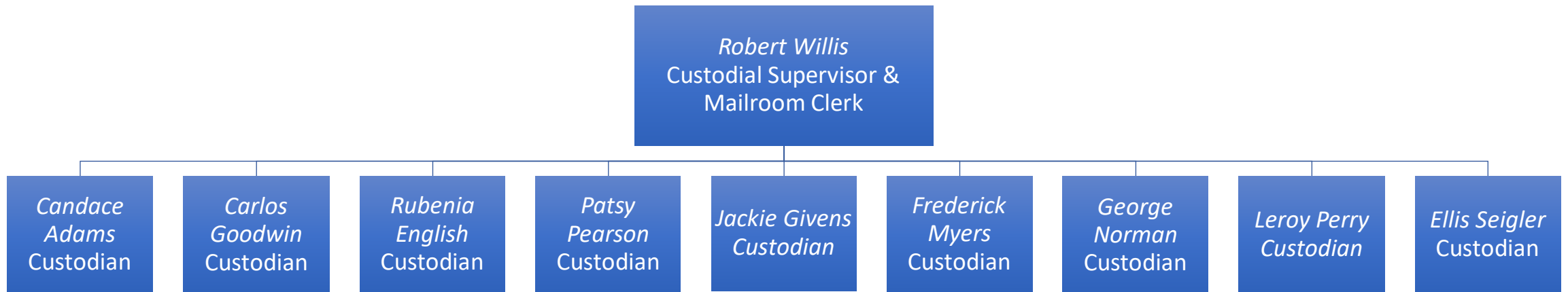
*Updated May 5, 2022*



This document is a graphic representation of the information for the Office of the Campus Store. If you need this document in an accessible format, please see the [Accessible Organizational Chart](#).

# Environmental Services

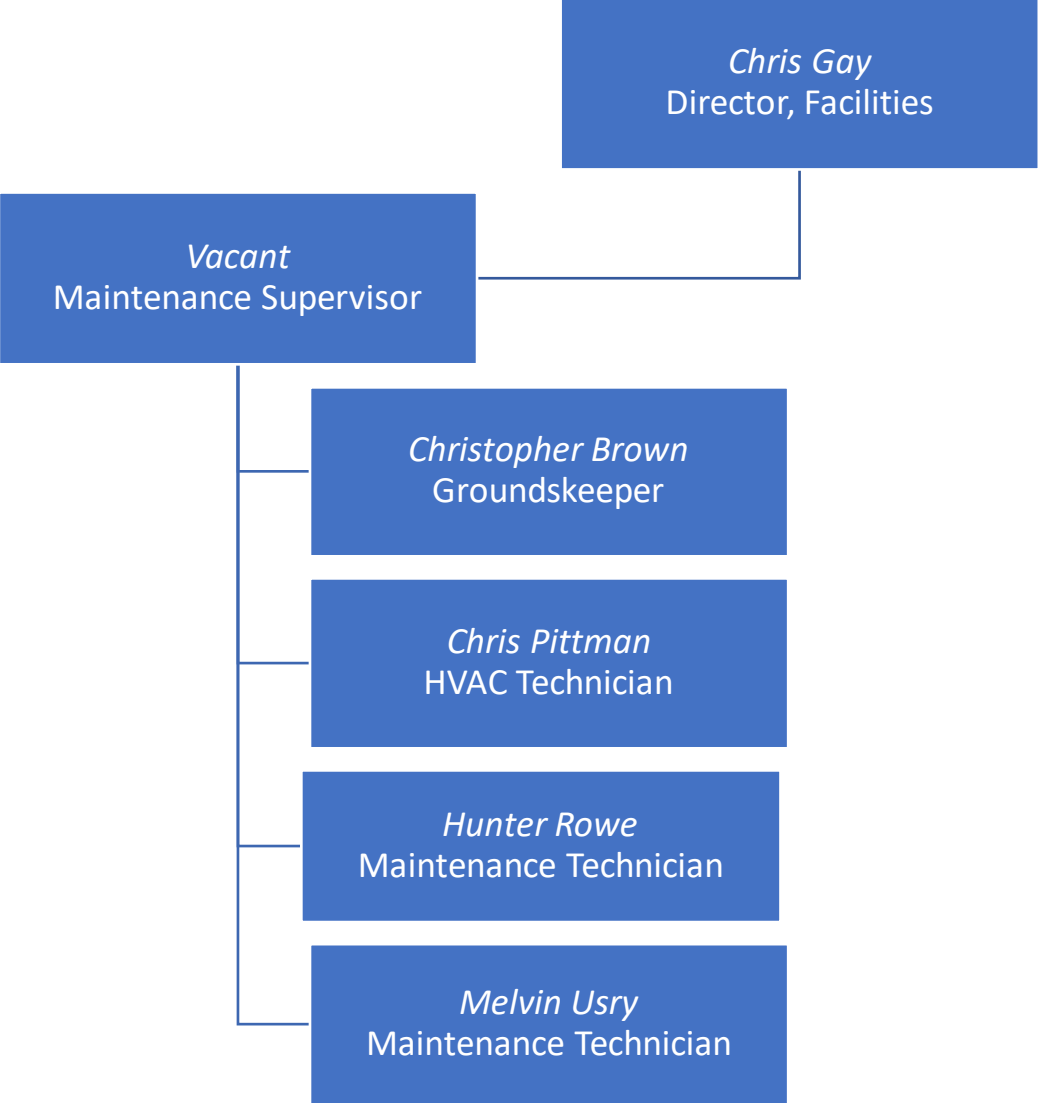
*Updated June 21, 2023*



This document is a graphic representation of the information for the Office of Environmental Services. If you need this document in an accessible format, please see the [Accessible Organizational Chart](#).

# Grounds and Maintenance

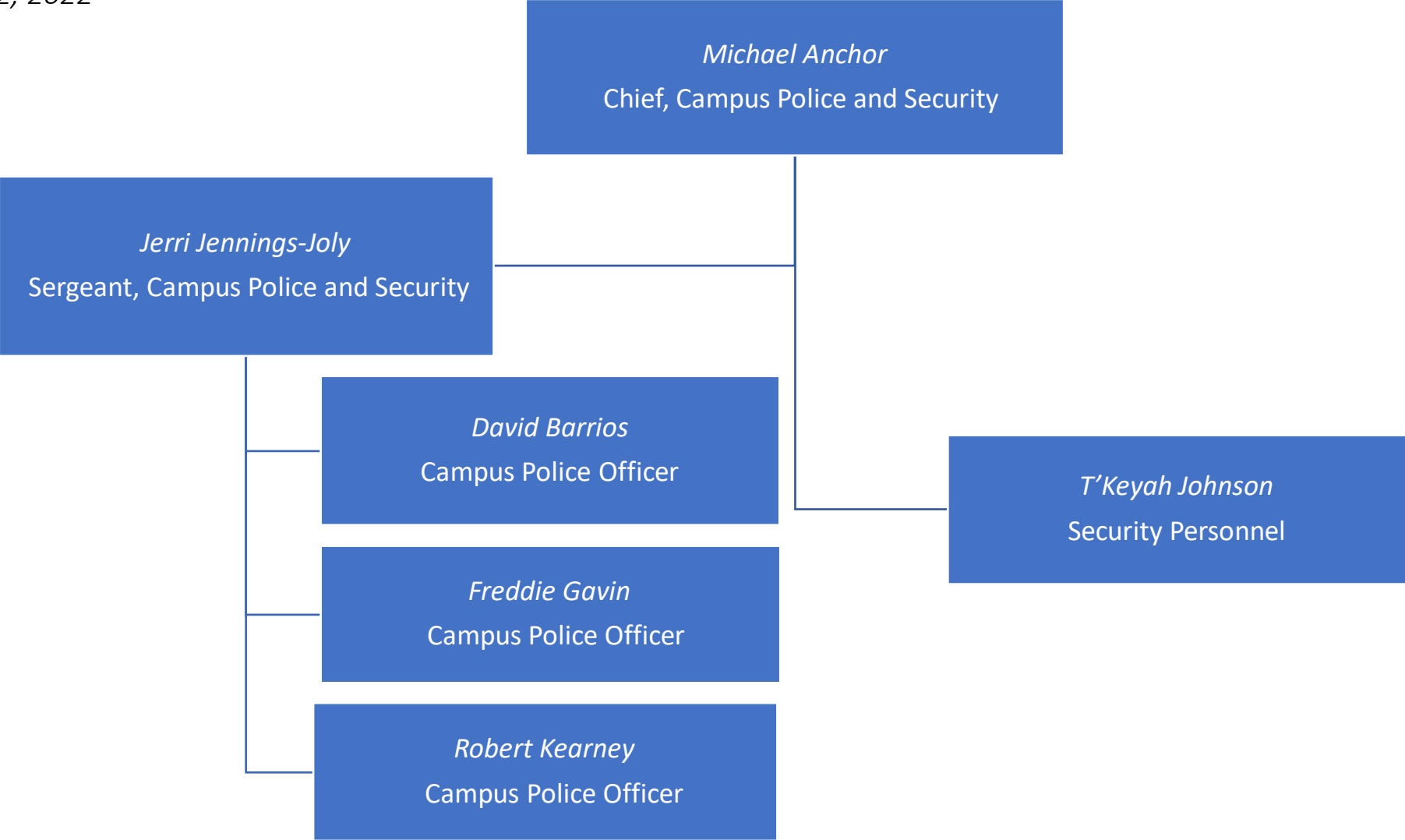
Updated December 1, 2022



This document is a graphic representation of the information for the Office of Grounds and Maintenance. If you need this document in an accessible format, please see the [Accessible Organizational Chart](#).

# Campus Police and Security

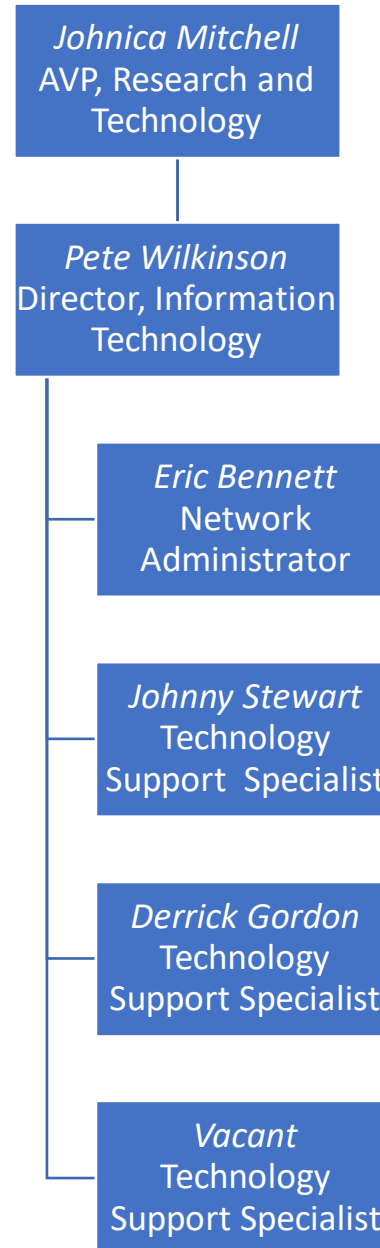
Updated August 2, 2022



This document is a graphic representation of the information for the Office of the Campus Police and Security. If you need this document in an accessible format, please see the [Accessible Organizational Chart](#).

# Information Technology

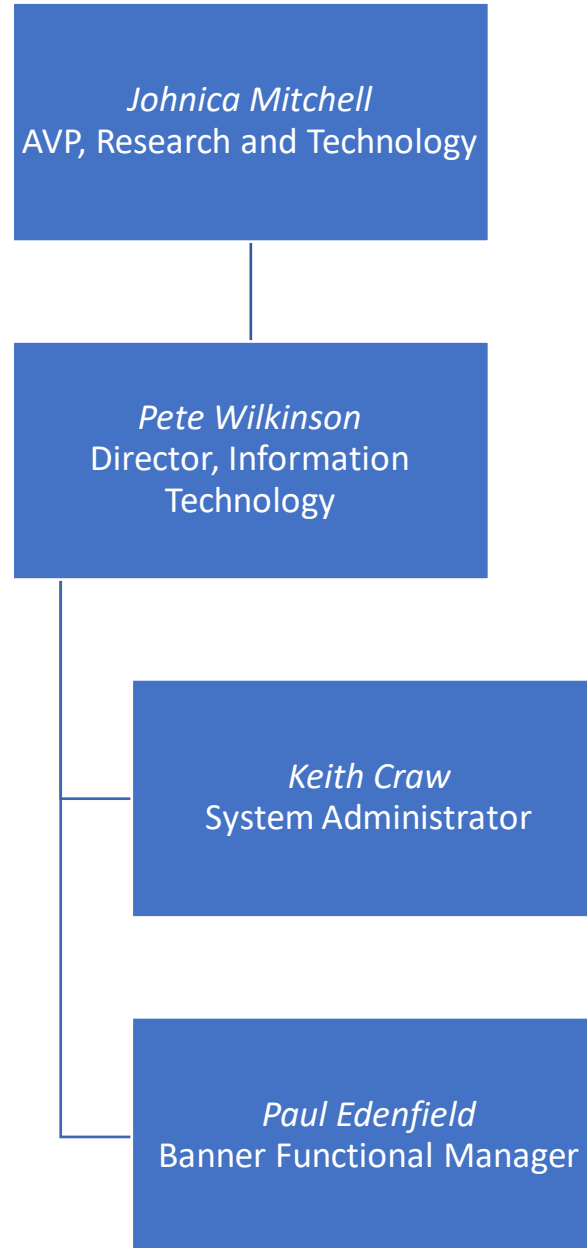
Updated November 9, 2022



This document is a graphic representation of the information for the Office of Information Technology. If you need this document in an accessible format, please see the [Accessible Organizational Chart](#).

# Information Technology

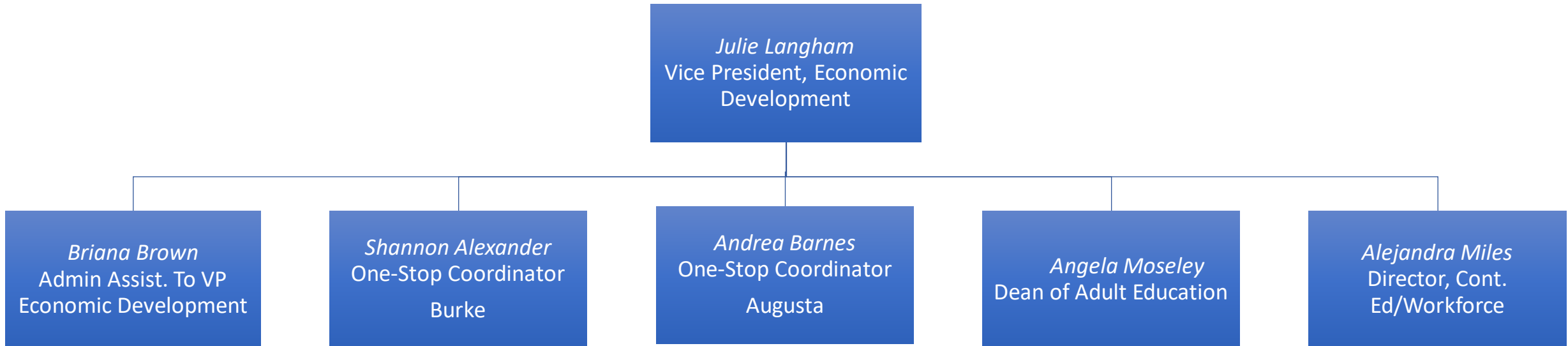
*Updated August 23, 2022*



This document is a graphic representation of the information for the Office of Information Technology. If you need this document in an accessible format, please see the [Accessible Organizational Chart](#).

# Economic Development

*Updated May 5, 2023*



This document is a graphic representation of the information for the Office of Economic Development. If you need this document in an accessible format, please see the [Accessible Organizational Chart](#).

# Continuing Education and Workforce Development

*Updated November 11, 2021*



This document is a graphic representation of the information for the Office Continuing Education and Workforce Development. If you need this document in an accessible format, please see the [Accessible Organizational Chart](#).



# Adult Education

*Updated July 26, 2023*

*Angela Moseley*  
Dean, Adult Education

*Vacant*  
Adult Literacy  
Teacher-ESL

*Charlene Crane*  
Adult Literacy  
Teacher

*James Bostock*  
Adult Literacy  
Teacher

*Tara Jenkins*  
Adult Literacy  
Teacher

*Vacant*  
Adult Literacy  
Teacher

*Rekayl Simpkins*  
Instructional  
Coordinator

*Mary Morning*  
Administrative  
Assistant

*Velinsie Ware*  
Admissions  
Assistant

*Vacant*  
Transition-Career  
Services Coordinator

This document is a graphic representation of the information for the Office of Adult Education. If you need this document in an accessible format, please see the [Accessible Organizational Chart](#).

# One-Stop Center

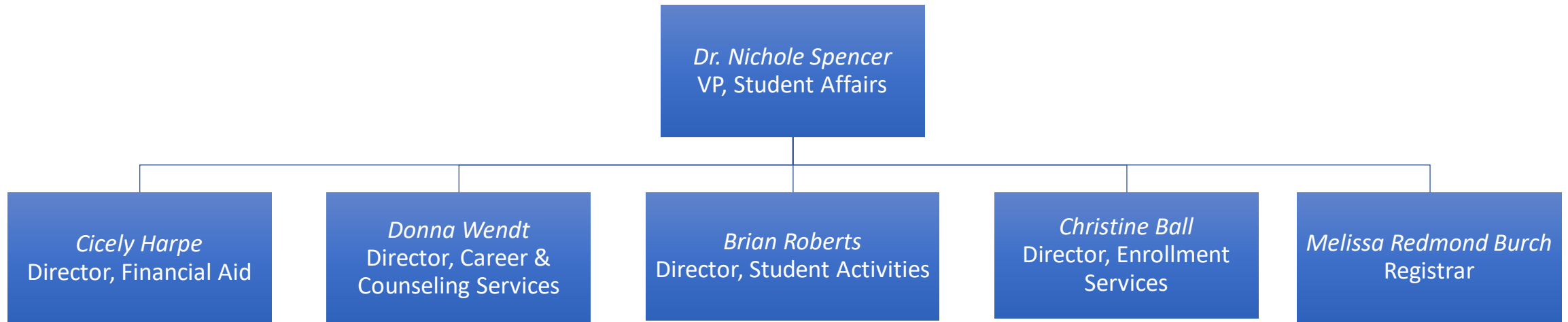
*Updated May 5, 2023*



This document is a graphic representation of the information for the Office of One-Stop Center. If you need this document in an accessible format, please see the [Accessible Organizational Chart](#).

# Student Affairs

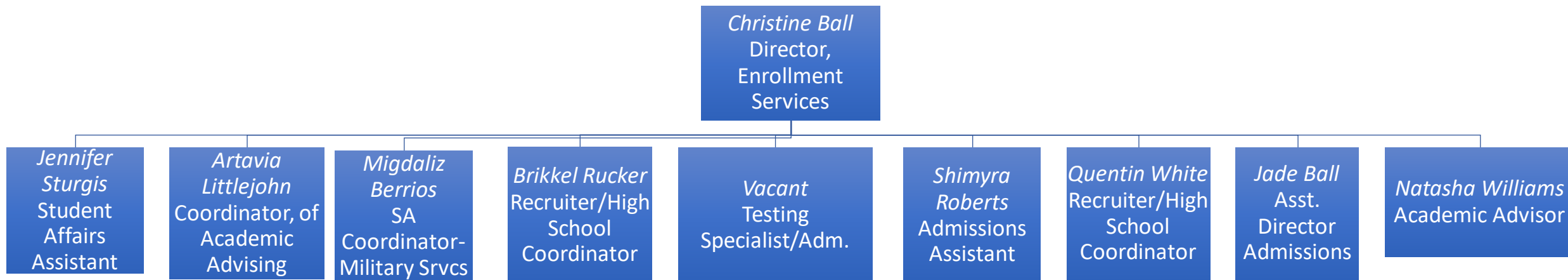
*Updated January 19, 2022*



This document is a graphic representation of the information for the Office of Student Affairs. If you need this document in an accessible format, please see the [Accessible Organizational Chart](#).

# Enrollment Services

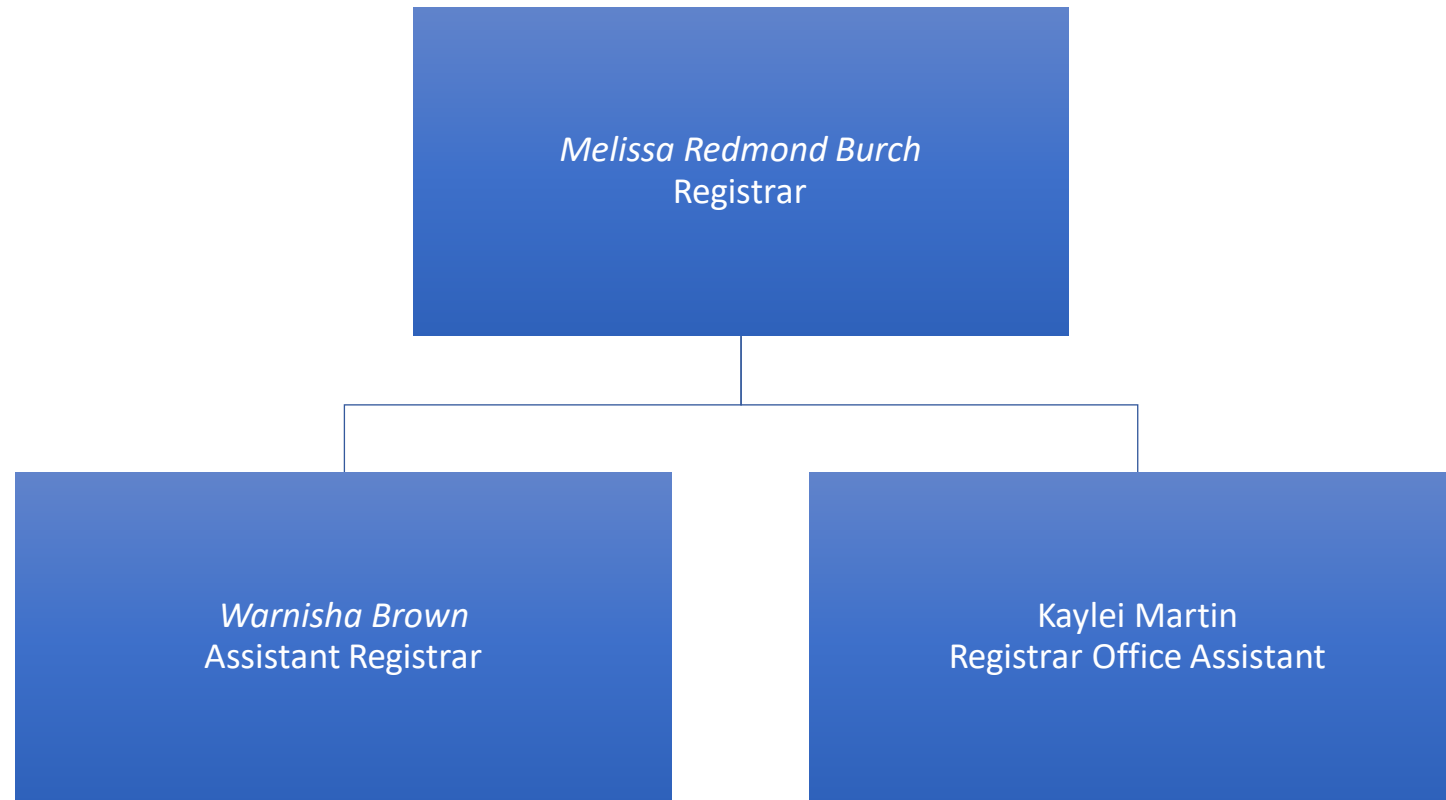
Updated October 1, 2023



This document is a graphic representation of the information for the Office of Enrollment Services. If you need this document in an accessible format, please see the [Accessible Organizational Chart](#).

# Student Records

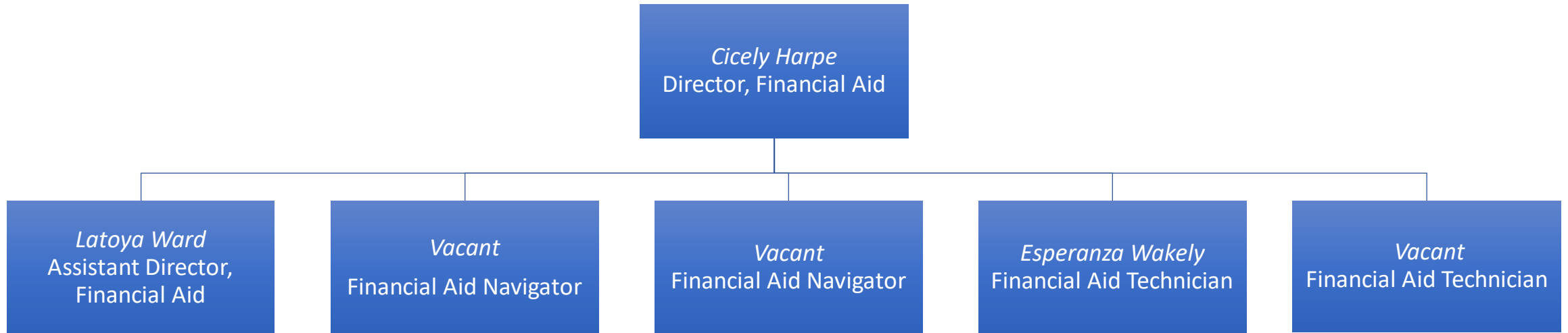
*Updated November 22, 2021*



This document is a graphic representation of the information for the Office of Student Records. If you need this document in an accessible format, please see the [Accessible Organizational Chart](#).

# Financial Aid

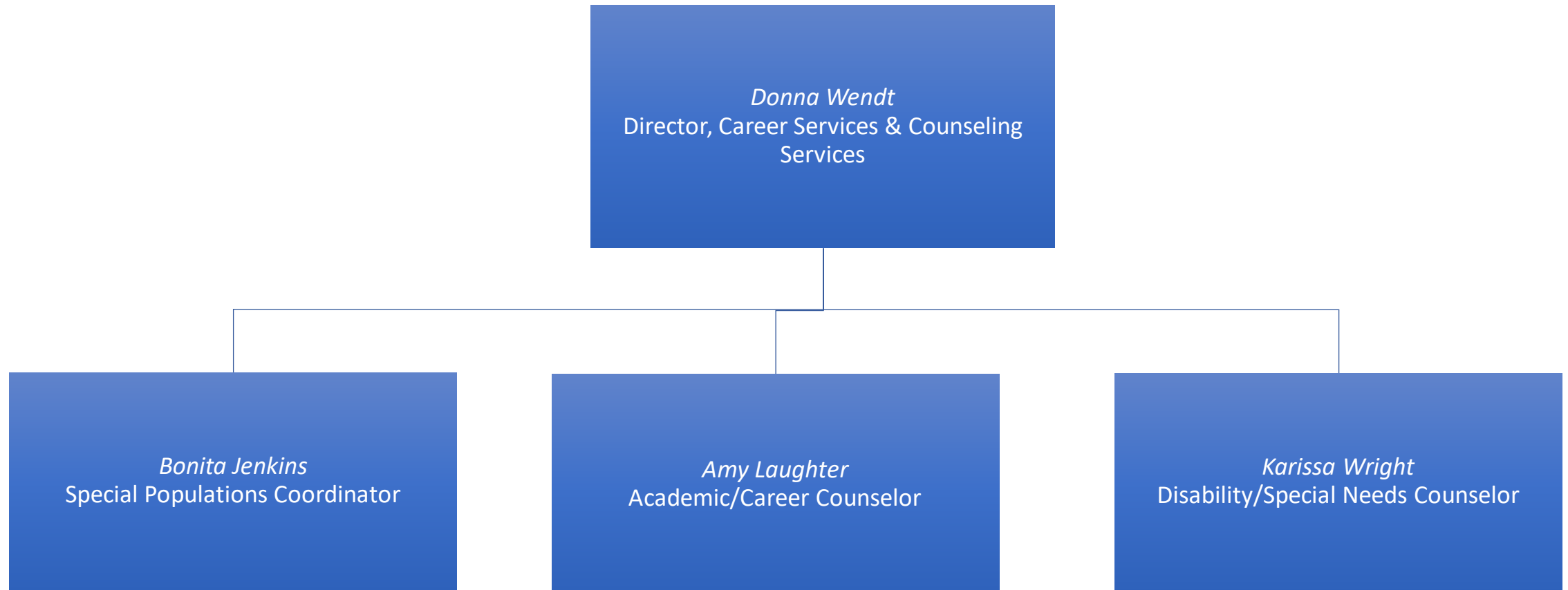
Updated October 1, 2023



This document is a graphic representation of the information for the Office of Financial Aid. If you need this document in an accessible format, please see the [Accessible Organizational Chart](#).

# Career Services

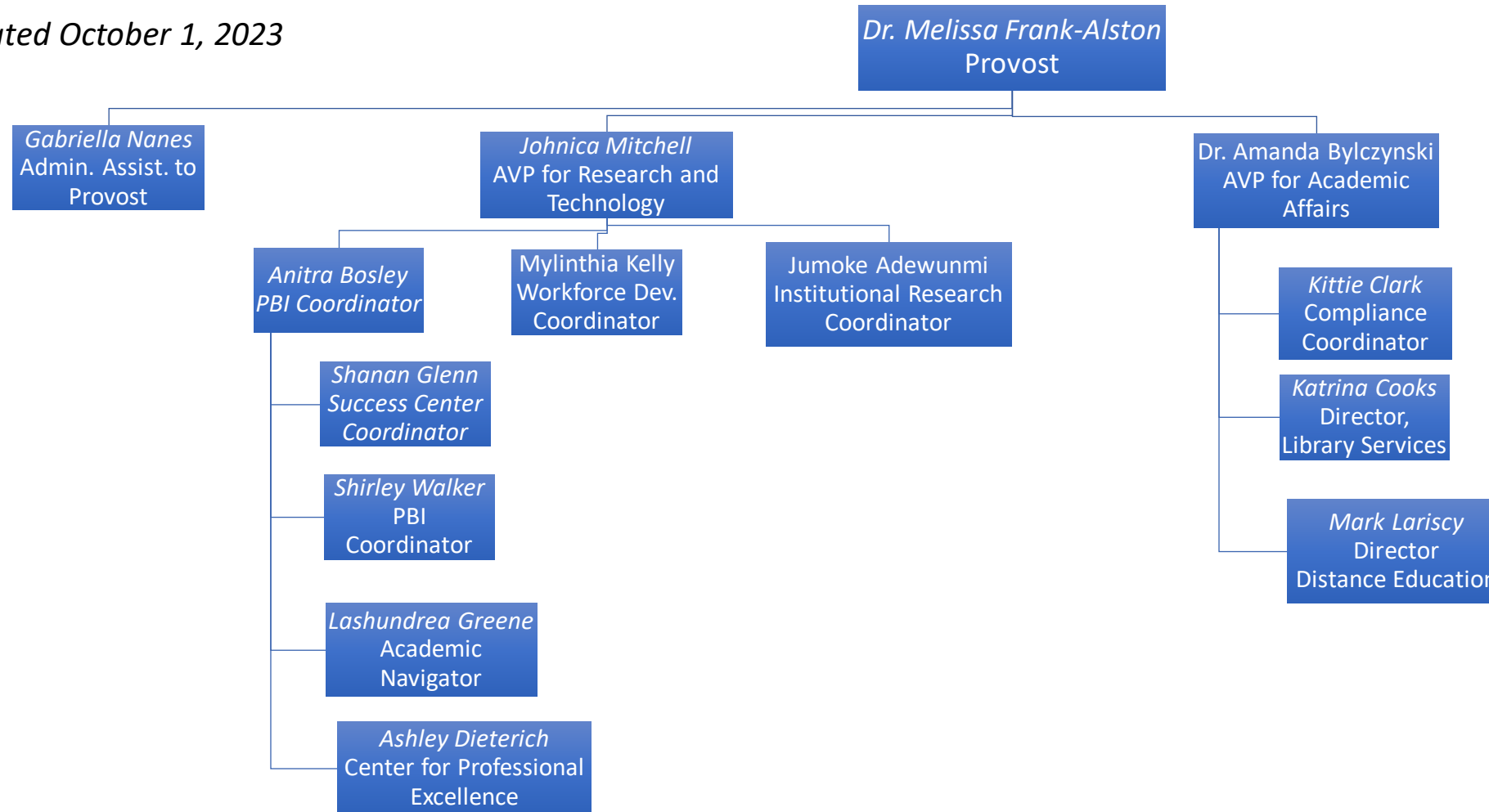
*Updated November 22, 2021*



This document is a graphic representation of the information for the Office of Career Services. If you need this document in an accessible format, please see the [Accessible Organizational Chart](#).

# Academic Affairs and Institutional Effectiveness and Research

Updated October 1, 2023

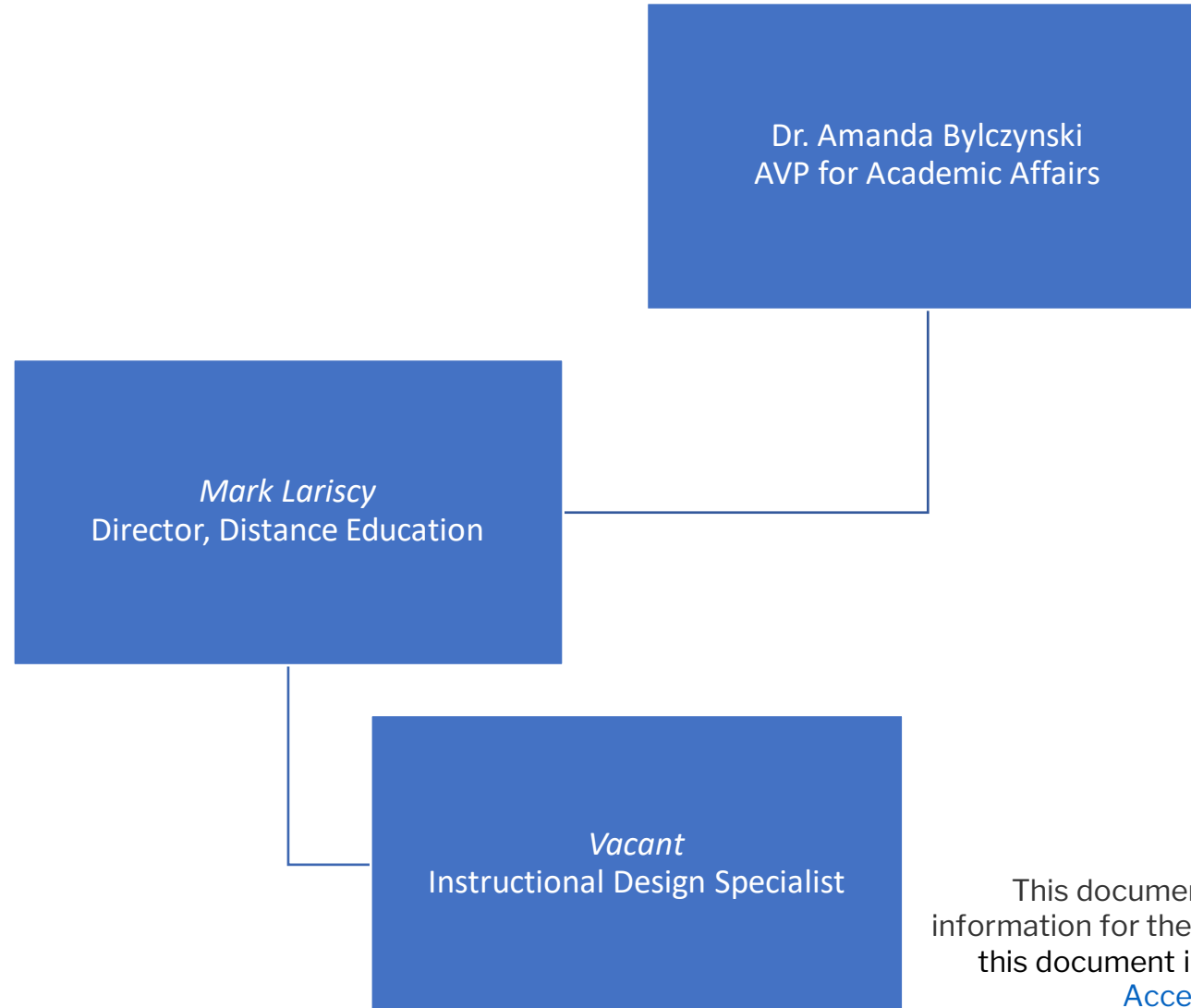


This document is a graphic representation of the information for the Office of Academic Affairs and Institutional Effectiveness and Research. If you need this document in an accessible format, please see the [Accessible Organizational Chart](#).



# Distance Education

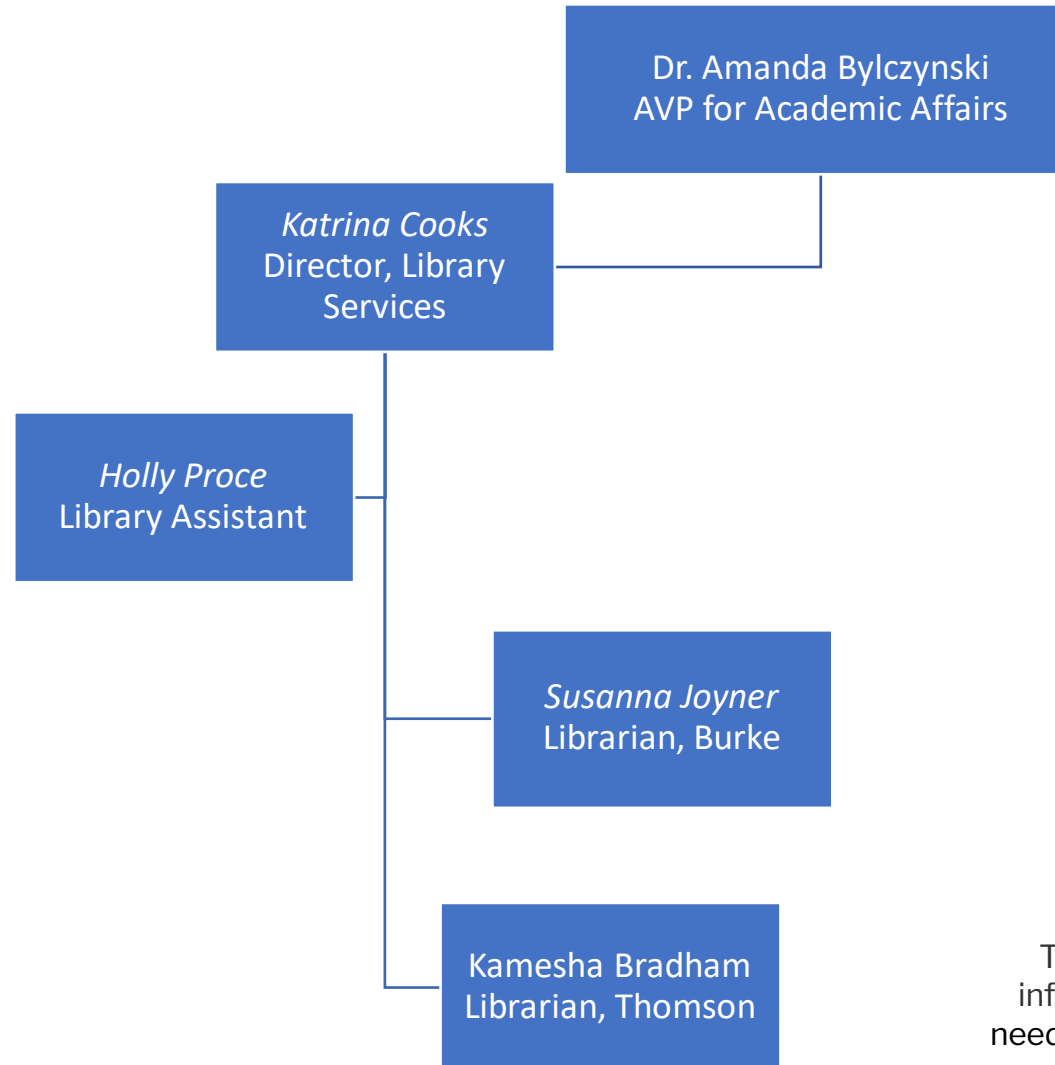
*Updated September 1, 2023*



This document is a graphic representation of the information for the Office of Distance Education. If you need this document in an accessible format, please see the [Accessible Organizational Chart](#).

# Library Services

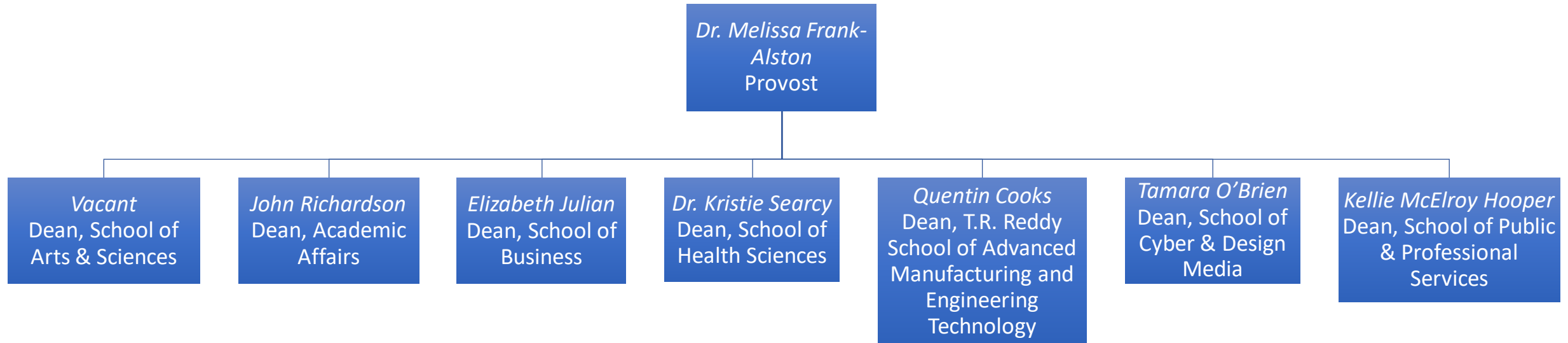
Updated September 1, 2023



This document is a graphic representation of the information for the Office of Library Services. If you need this document in an accessible format, please see the [Accessible Organizational Chart](#).

# Academic Affairs and Institutional Effectiveness and Research

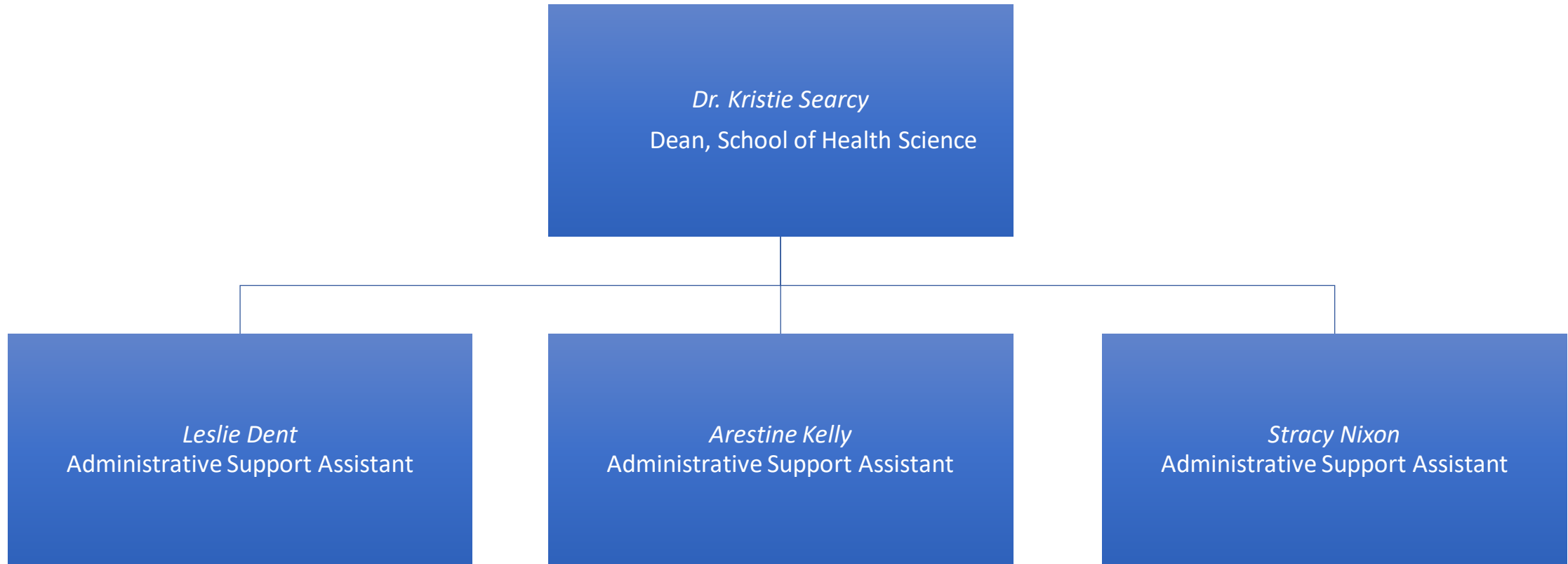
*Updated October 1, 2023*



This document is a graphic representation of the information for the Office of Academic Affairs and Institutional Effectiveness and Research. If you need this document in an accessible format, please see the [Accessible Organizational Chart](#).

# School of Health Sciences

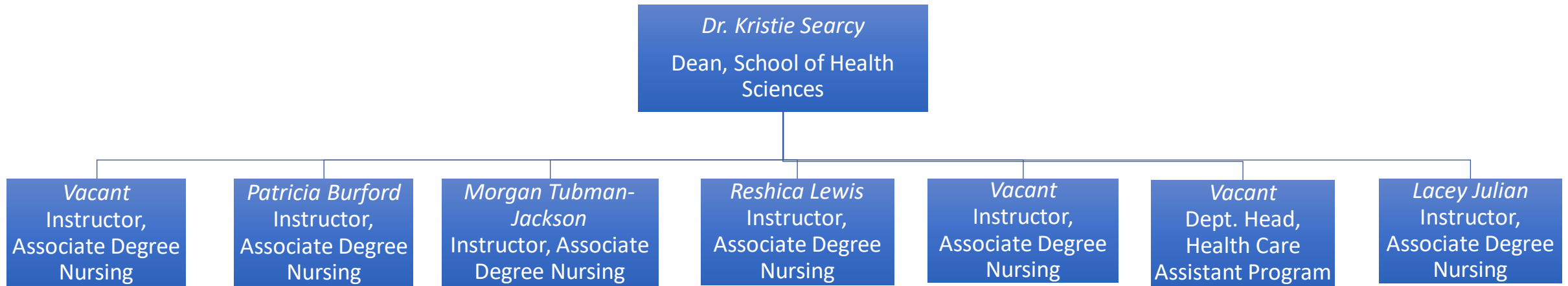
*Updated January 20, 2022*



This document is a graphic representation of the information for the Office of School of Health Sciences. If you need this document in an accessible format, please see the [Accessible Organizational Chart](#).

# School of Health Sciences

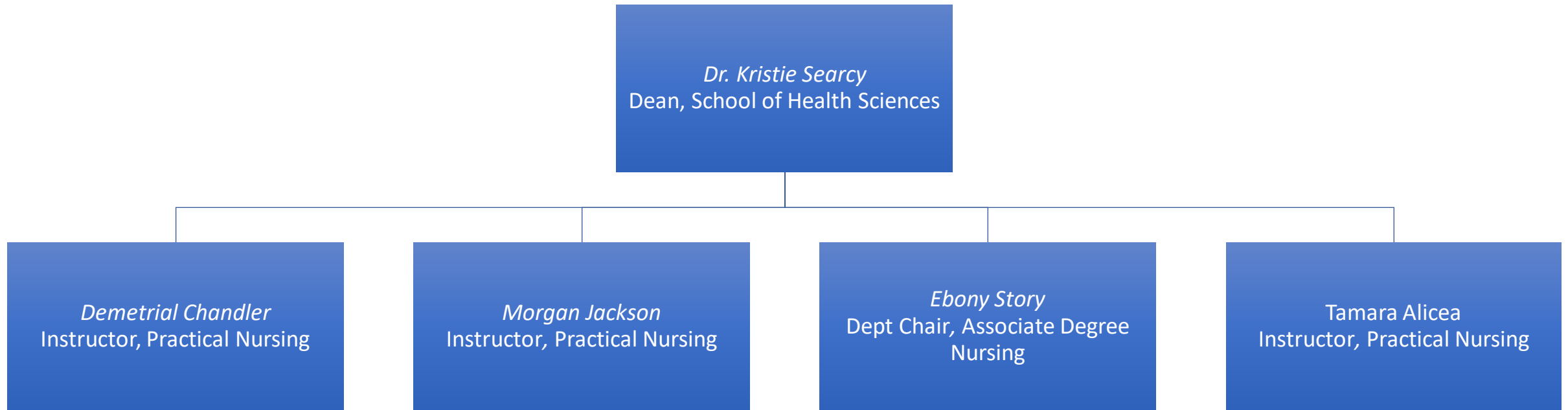
Updated July 26, 2023



This document is a graphic representation of the information for the Office of School of Health Sciences. If you need this document in an accessible format, please see the [Accessible Organizational Chart](#).

# School of Health Sciences

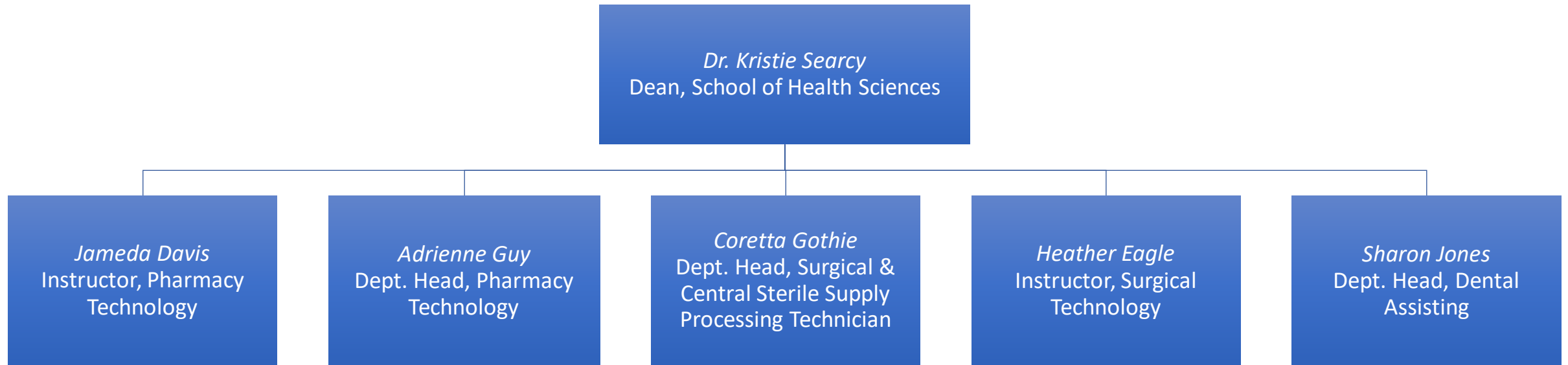
*Updated September 28, 2022*



This document is a graphic representation of the information for the Office of School of Health Sciences. If you need this document in an accessible format, please see the [Accessible Organizational Chart](#).

# School of Health Sciences

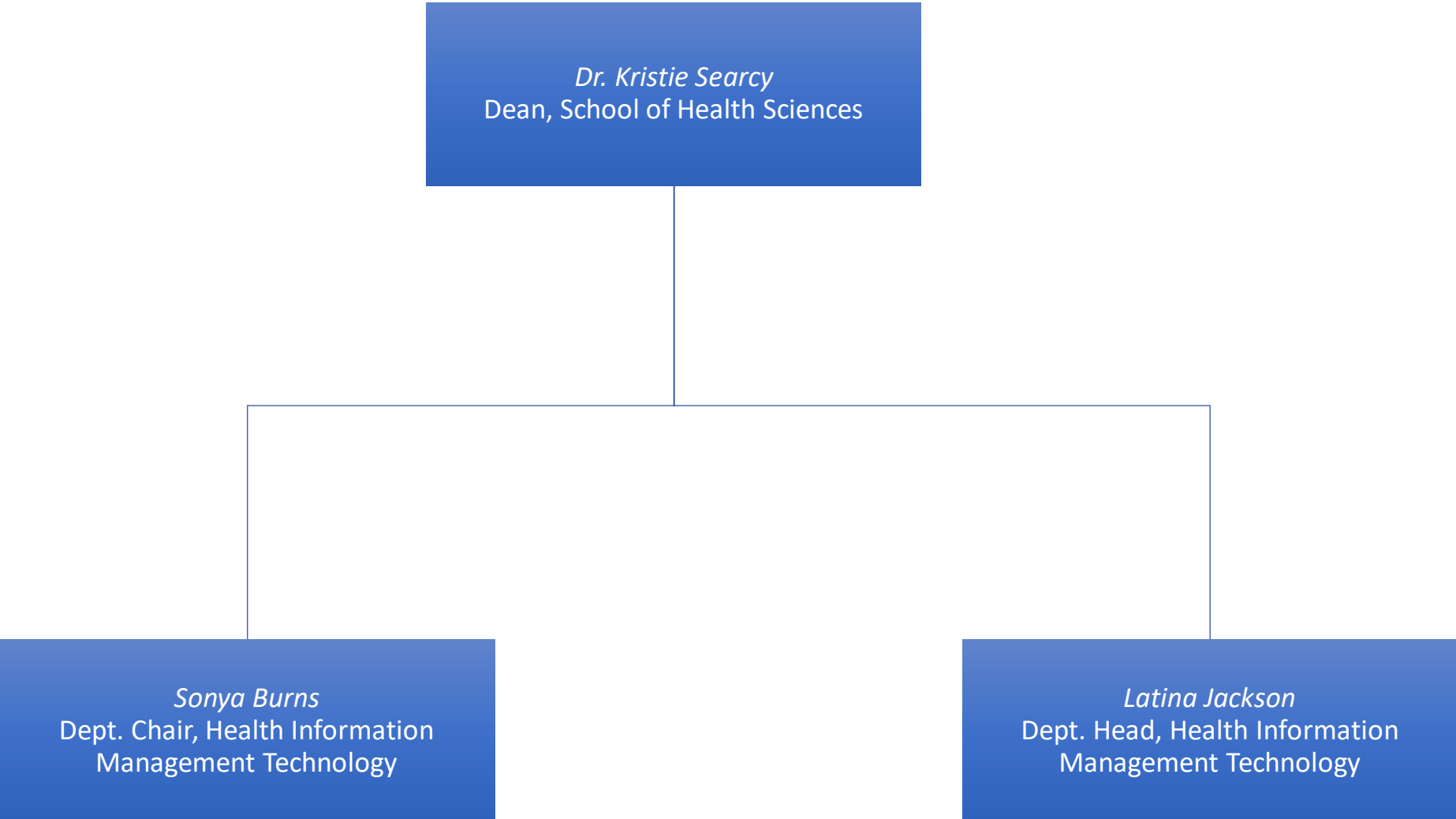
*Updated March 9, 2023*



This document is a graphic representation of the information for the Office of School of Health Sciences. If you need this document in an accessible format, please see the [Accessible Organizational Chart](#).

# School of Health Sciences

Updated February 21, 2023

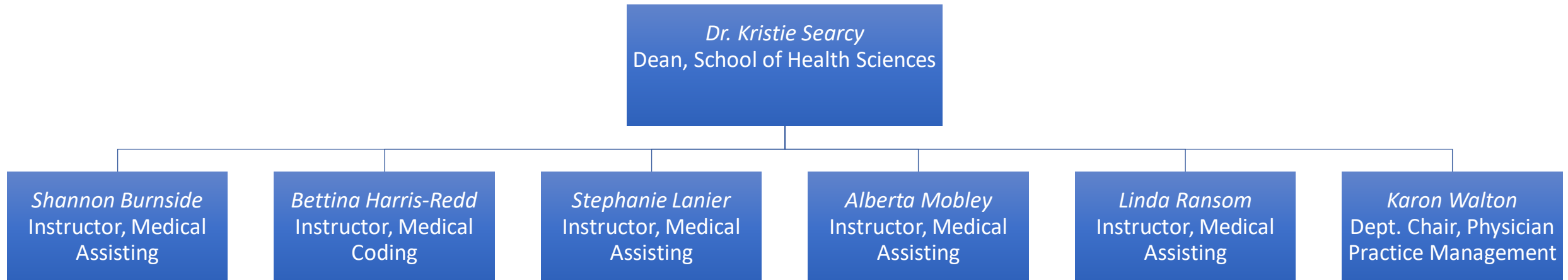


This document is a graphic representation of the information for the Office of School of Health Sciences. If you need this document in an accessible format, please see the [Accessible Organizational Chart](#).



# School of Health Sciences

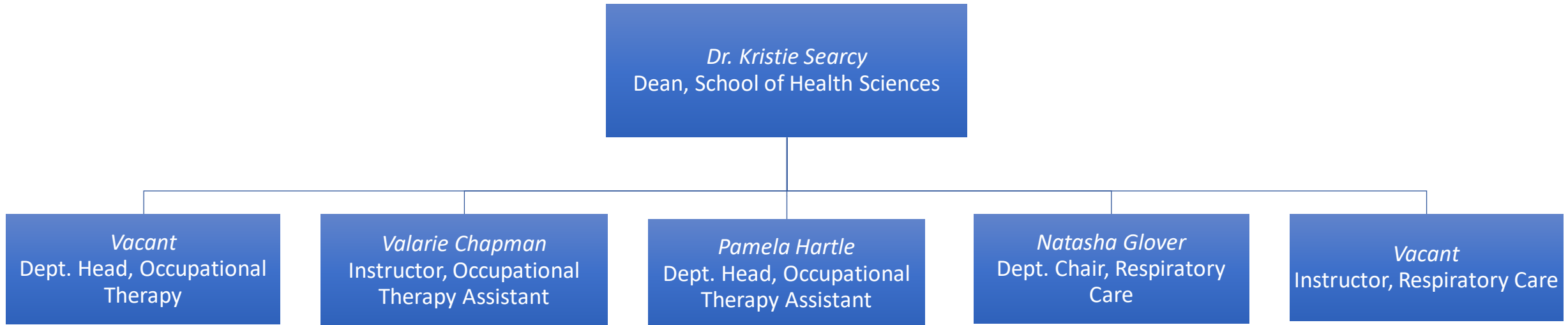
*Updated February 21, 2023*



This document is a graphic representation of the information for the Office of School of Health Sciences. If you need this document in an accessible format, please see the [Accessible Organizational Chart](#).

# School of Health Sciences

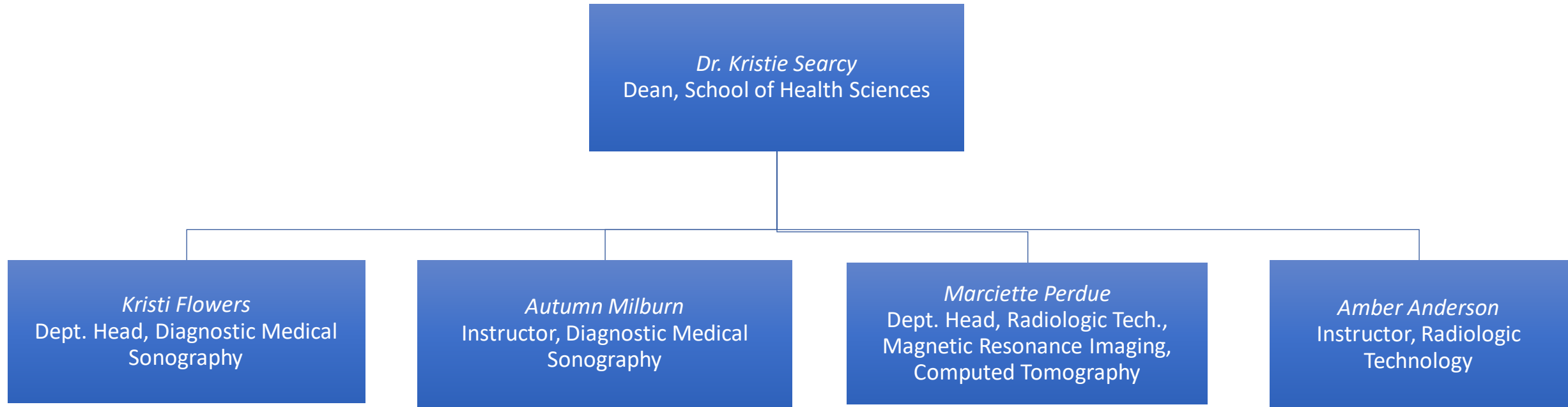
Updated July 26, 2023



This document is a graphic representation of the information for the Office of School of Health Sciences. If you need this document in an accessible format, please see the [Accessible Organizational Chart](#).

# School of Health Sciences

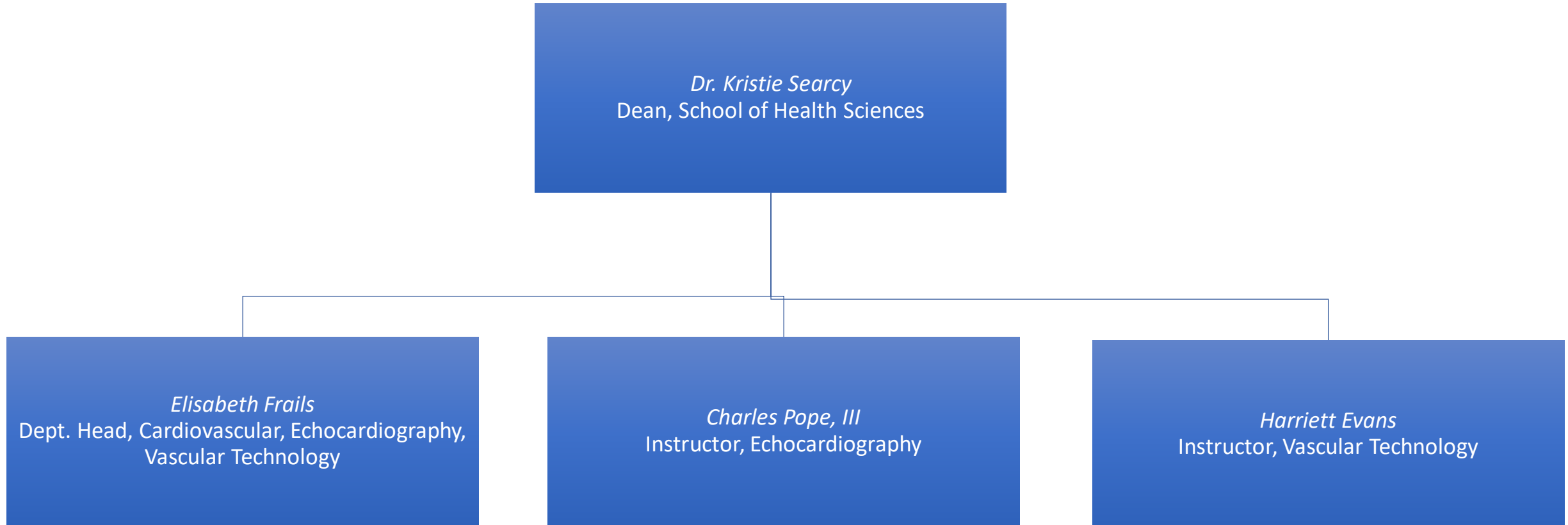
*Updated September 28, 2022*



This document is a graphic representation of the information for the Office of School of Health Sciences. If you need this document in an accessible format, please see the [Accessible Organizational Chart](#).

# School of Health Sciences

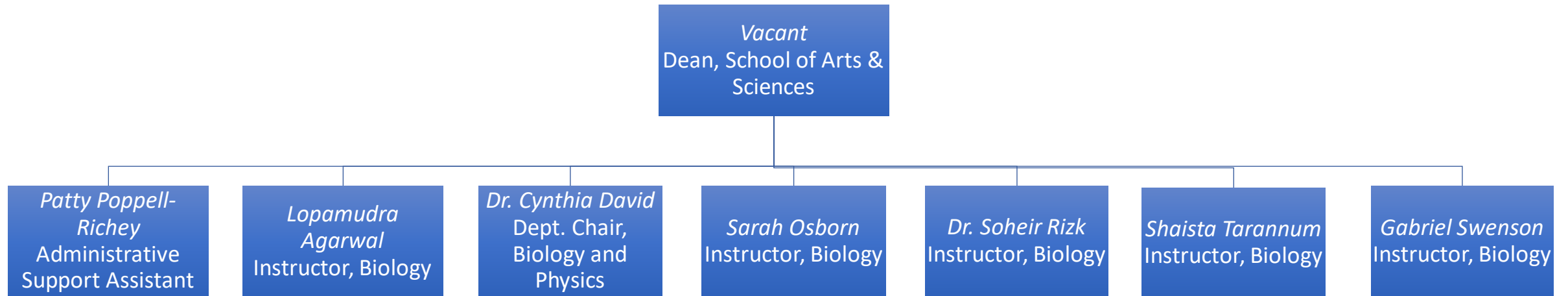
*Updated January 20, 2022*



This document is a graphic representation of the information for the Office of School of Health Sciences. If you need this document in an accessible format, please see the [Accessible Organizational Chart](#).

# School of Arts and Sciences

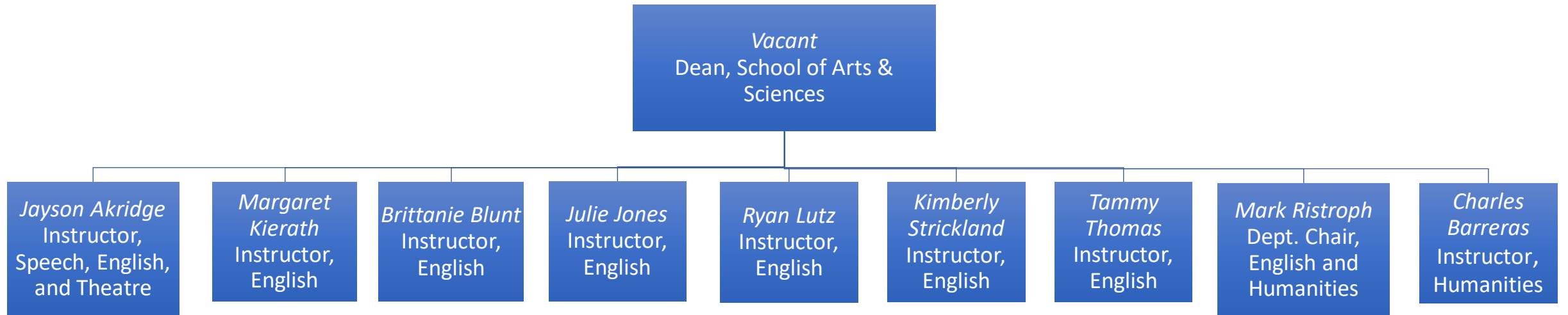
*Updated June 21, 2023*



This document is a graphic representation of the information for the Office of School of Arts and Sciences. If you need this document in an accessible format, please see the [Accessible Organizational Chart](#).

# School of Arts and Sciences

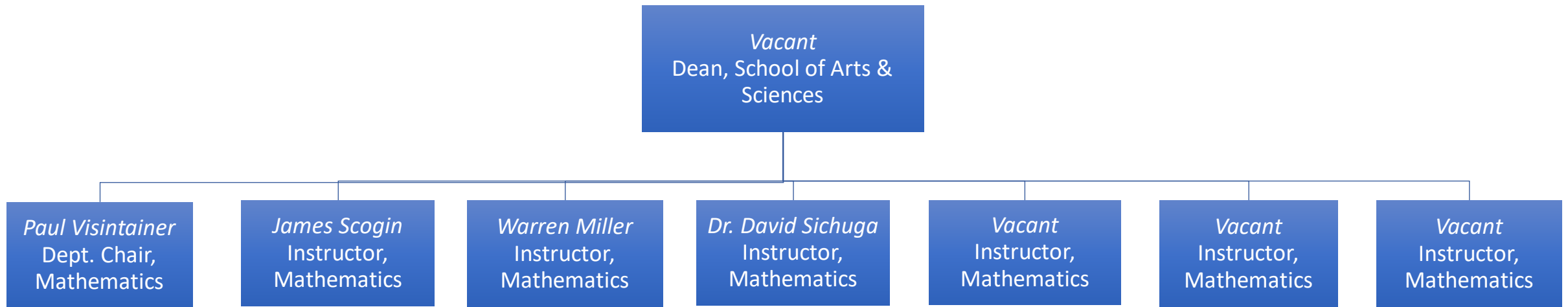
*Updated June 21, 2023*



This document is a graphic representation of the information for the Office of School of Arts and Sciences. If you need this document in an accessible format, please see the [Accessible Organizational Chart](#).

# School of Arts and Sciences

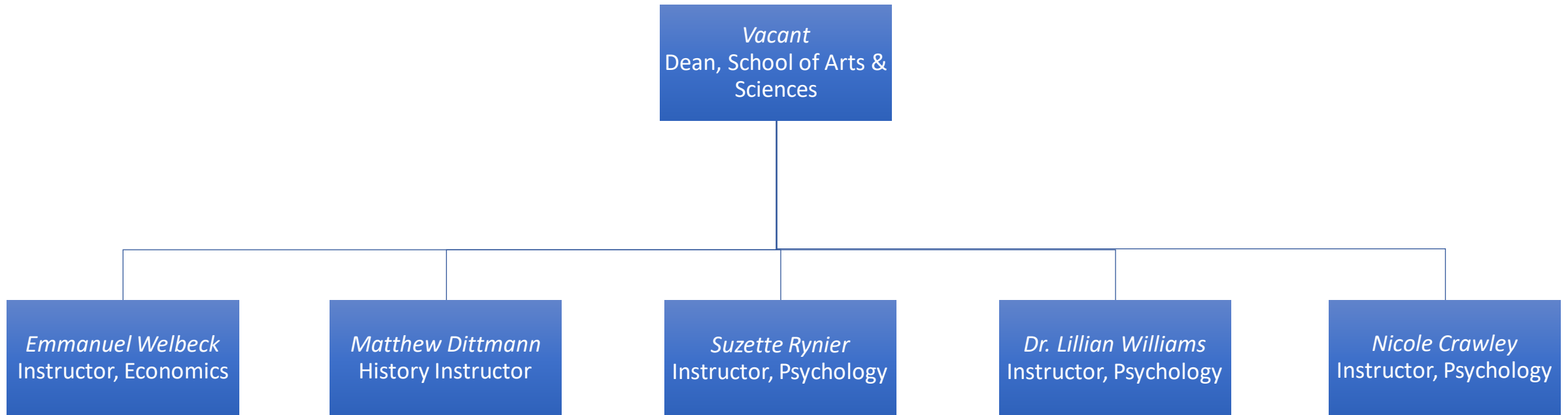
*Updated June 21, 2023*



This document is a graphic representation of the information for the Office of School of Arts and Sciences. If you need this document in an accessible format, please see the [Accessible Organizational Chart](#).

# School of Arts and Sciences

*Updated June 21, 2023*

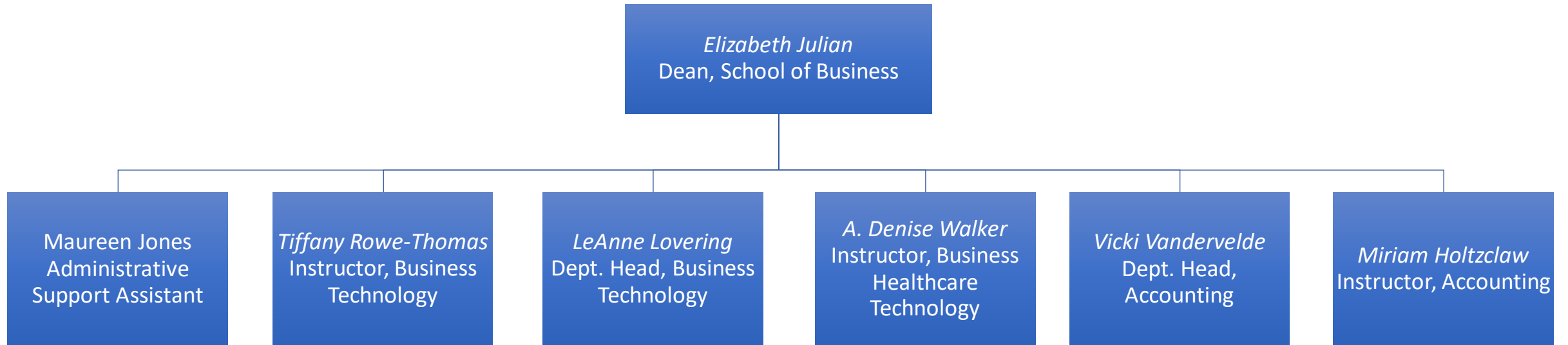


This document is a graphic representation of the information for the Office of School of Arts and Sciences. If you need this document in an accessible format, please see the [Accessible Organizational Chart](#).



# School of Business

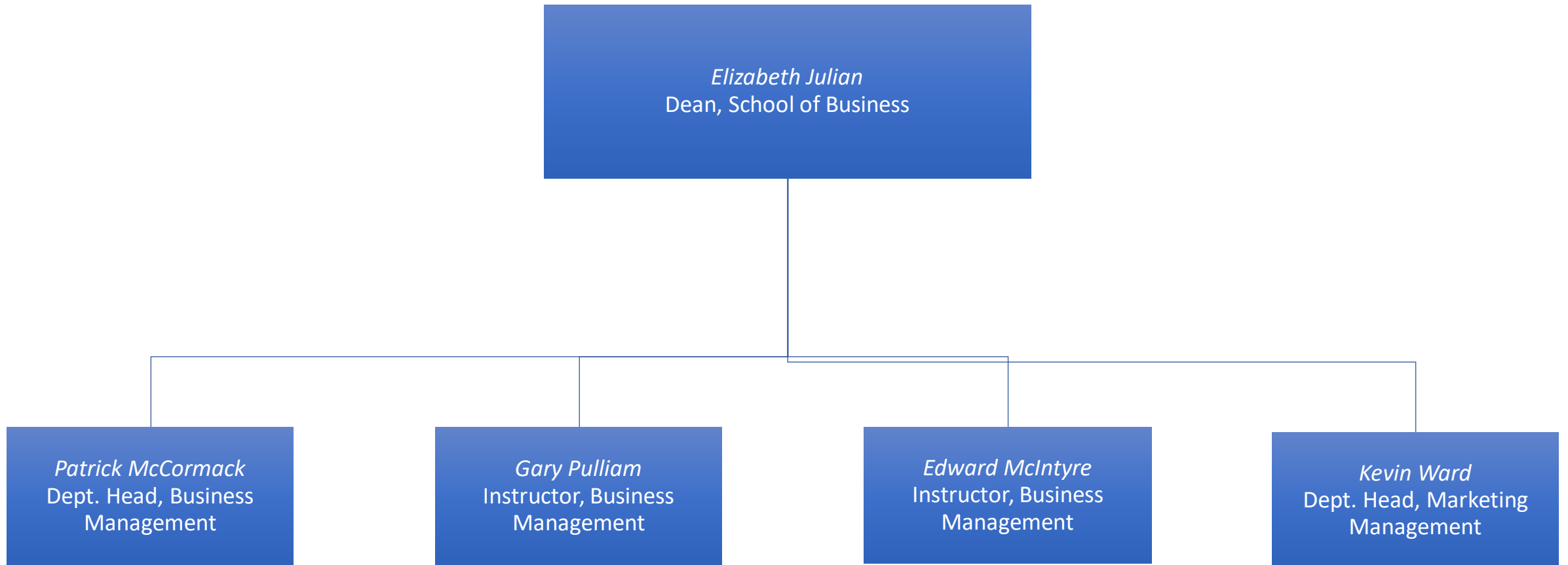
*Updated December 7, 2021*



This document is a graphic representation of the information for the Office of School of Business. If you need this document in an accessible format, please see the [Accessible Organizational Chart](#).

# School of Business

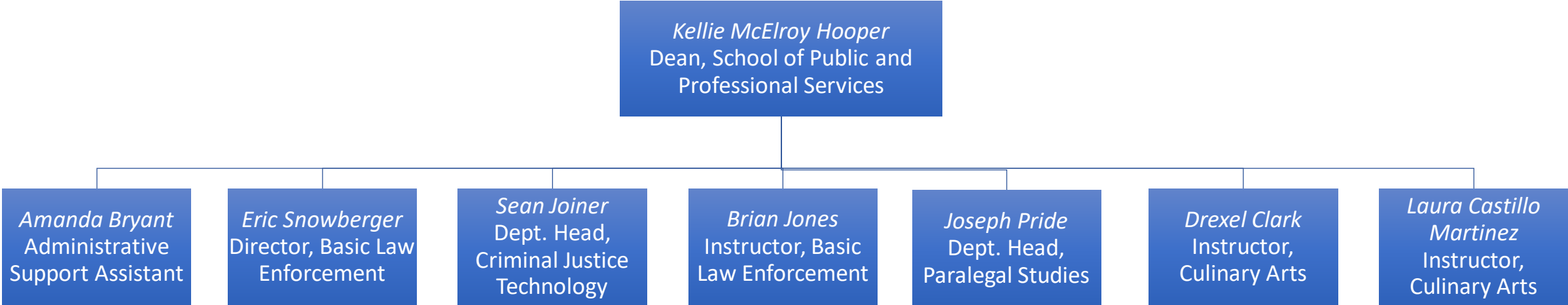
*Updated May 5, 2022*



This document is a graphic representation of the information for the Office of School of Business. If you need this document in an accessible format, please see the [Accessible Organizational Chart](#).

# School of Public and Professional Services

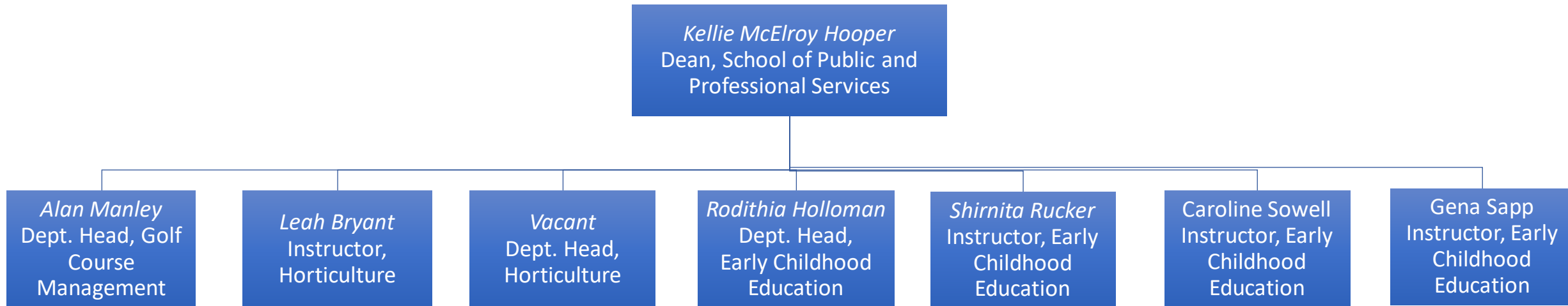
Updated March 2, 2022



This document is a graphic representation of the information for the Office of School of Public and Professional Services. If you need this document in an accessible format, please see the [Accessible Organizational Chart](#).

# School of Public and Professional Services

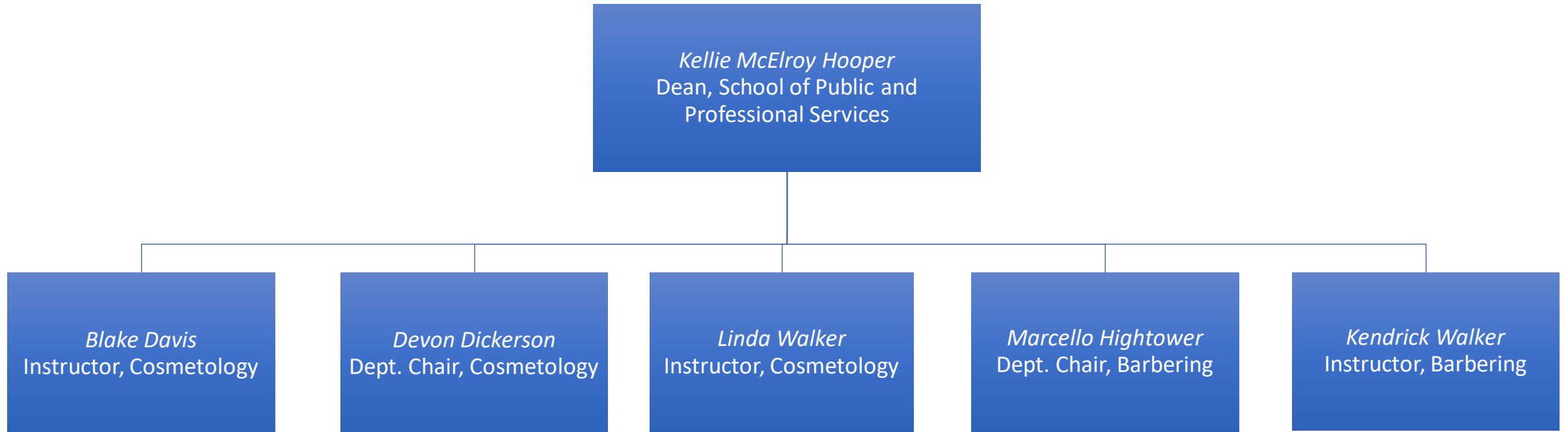
*Updated July 26, 2022*



This document is a graphic representation of the information for the Office of School of Public and Professional Services. If you need this document in an accessible format, please see the [Accessible Organizational Chart](#).

# School of Public and Professional Services

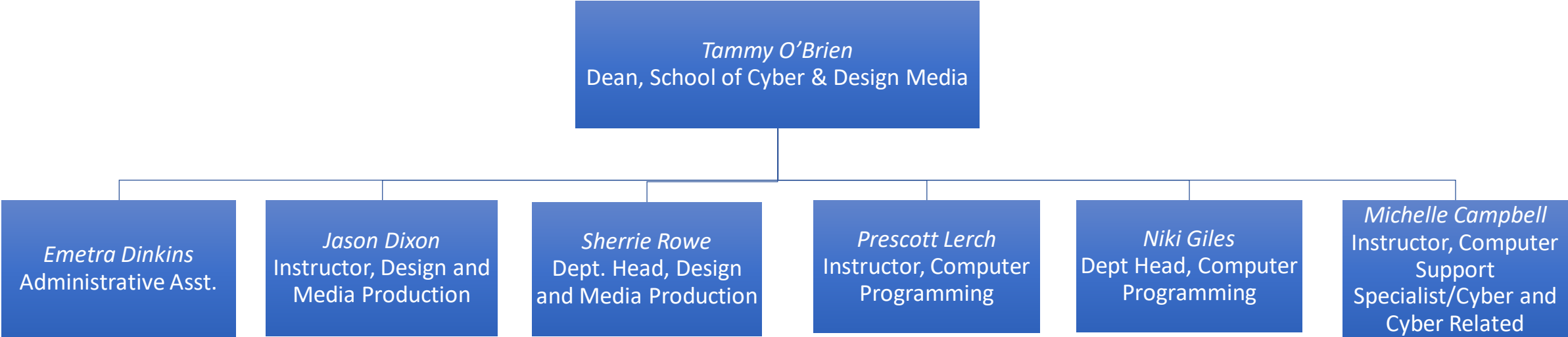
*Updated March 17, 2023*



This document is a graphic representation of the information for the Office of School of Public and Professional Services. If you need this document in an accessible format, please see the [Accessible Organizational Chart](#).

# School of Cyber and Design Media

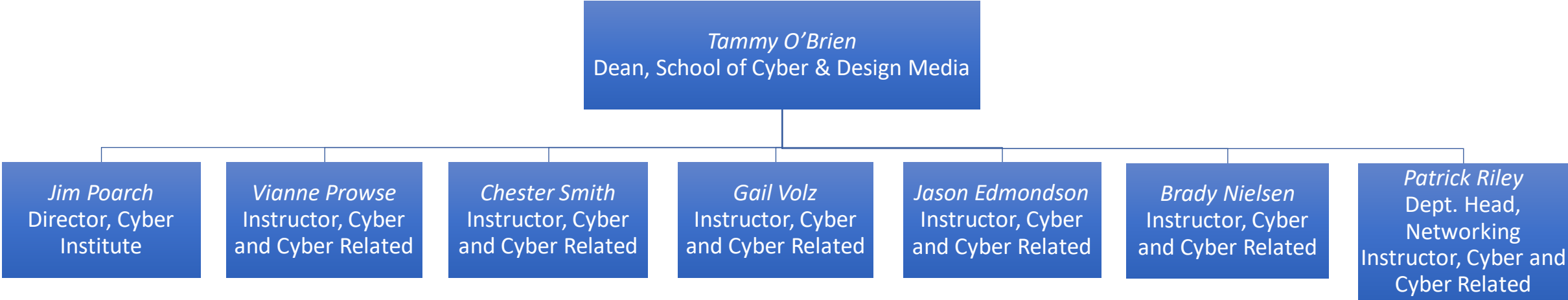
Updated January 23, 2023



This document is a graphic representation of the information for the Office of School of Cyber and Design Media. If you need this document in an accessible format, please see the [Accessible Organizational Chart](#).

# School of Cyber and Design Media

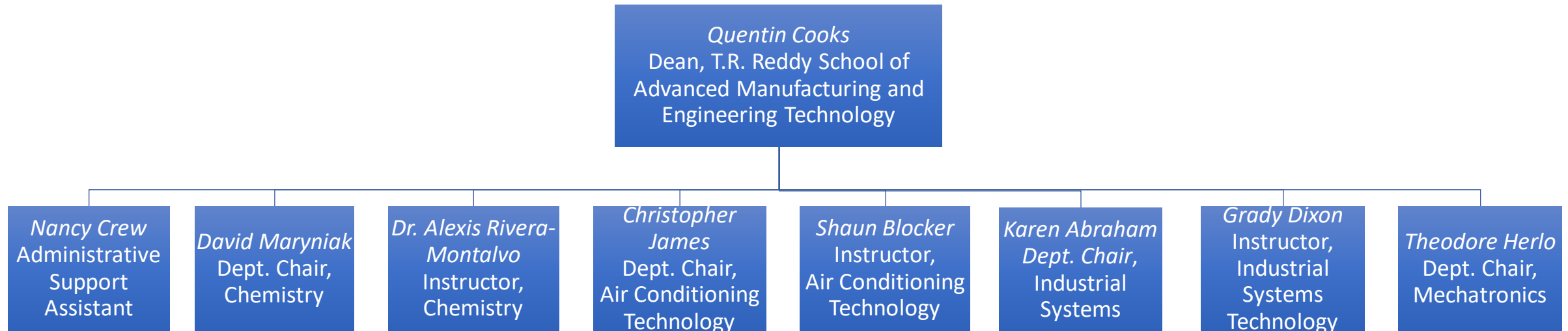
Updated May 5, 2022



This document is a graphic representation of the information for the Office of School of Cyber and Design Media. If you need this document in an accessible format, please see the [Accessible Organizational Chart](#).

# T.R. Reddy School of Advanced Manufacturing and Engineering Technology

*Updated October 1, 2023*

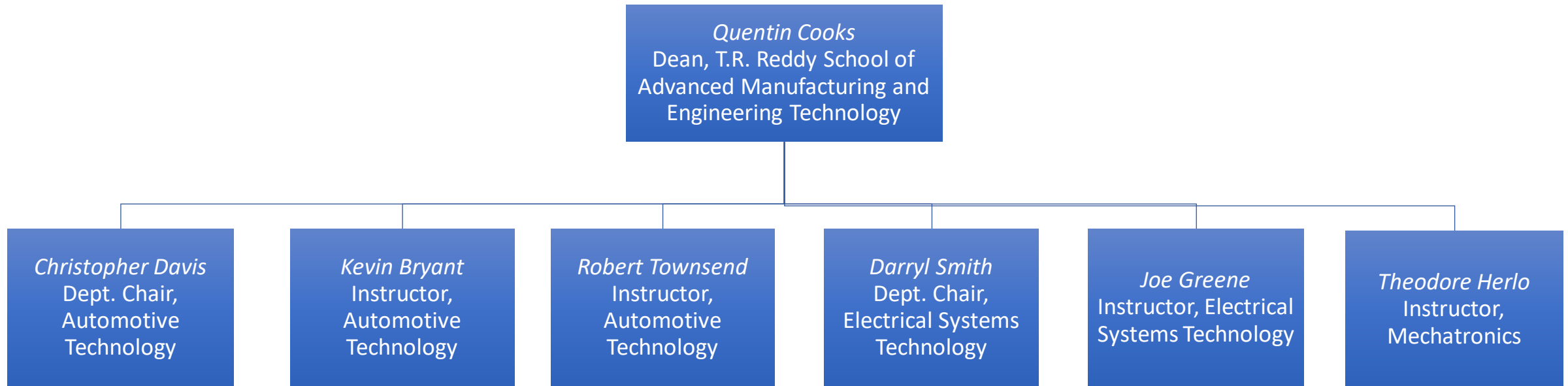


This document is a graphic representation of the information for the Office of School of Aviation, Industrial, And Engineering Technology. If you need this document in an accessible format, please see the [Accessible Organizational Chart](#).



# T.R. Reddy School of Advanced Manufacturing and Engineering Technology

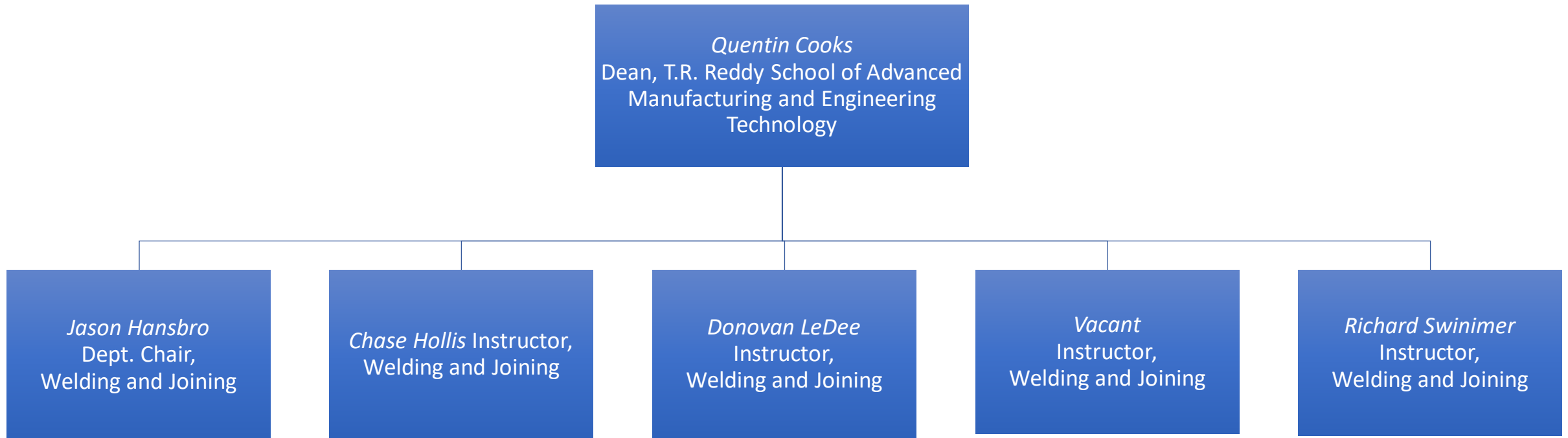
*Updated October 1, 2023*



This document is a graphic representation of the information for the Office of School of Aviation, Industrial and Engineering Technology. If you need this document in an accessible format, please see the [Accessible Organizational Chart](#).

# T.R. Reddy School of Advanced Manufacturing and Engineering Technology

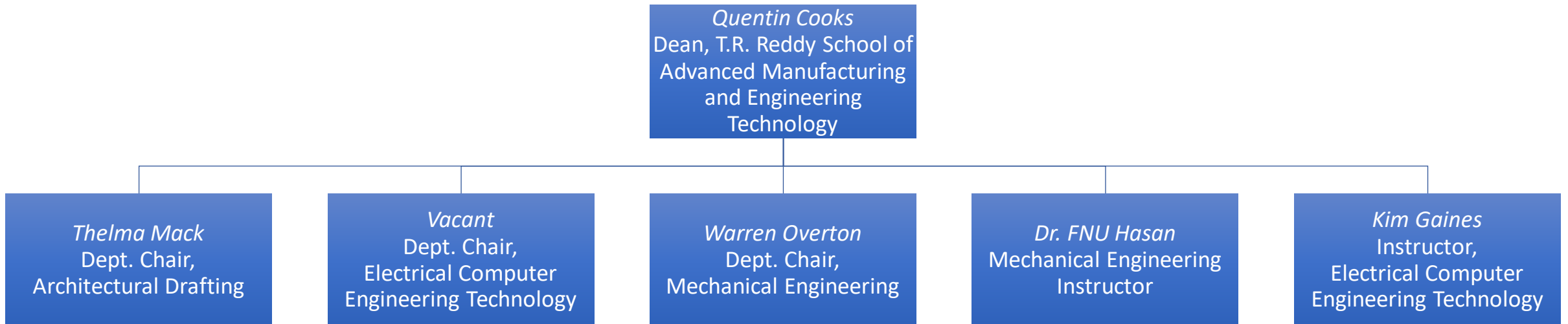
*Updated October 1, 2023*



This document is a graphic representation of the information for the Office of School of Aviation, Industrial and Engineering Technology. If you need this document in an accessible format, please see the [Accessible Organizational Chart](#).

# T.R. Reddy School of Advanced Manufacturing and Engineering Technology

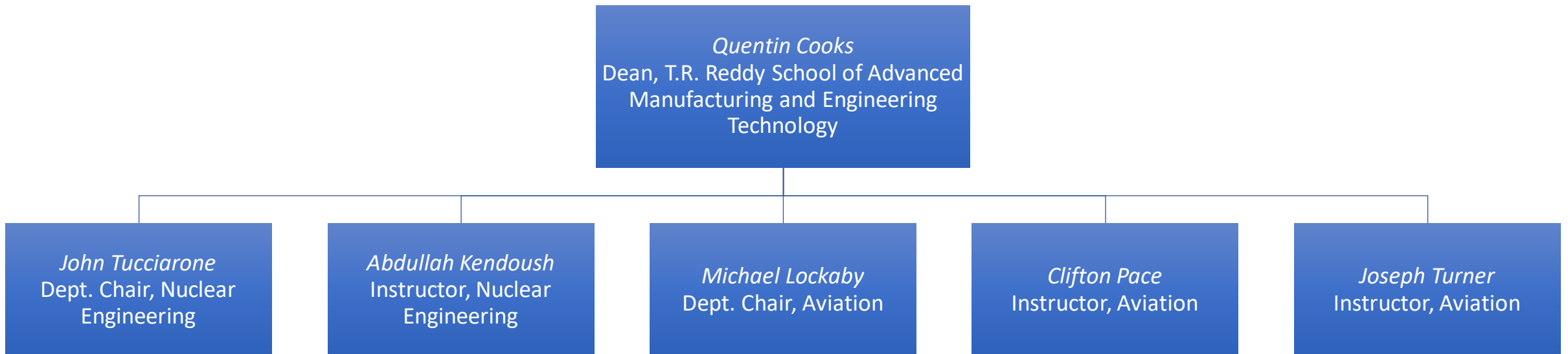
*Updated October 1, 2023*



This document is a graphic representation of the information for the Office of School of Aviation, Industrial and Engineering Technology. If you need this document in an accessible format, please see the [Accessible Organizational Chart](#).

# T.R. Reddy School of Advanced Manufacturing and Engineering Technology

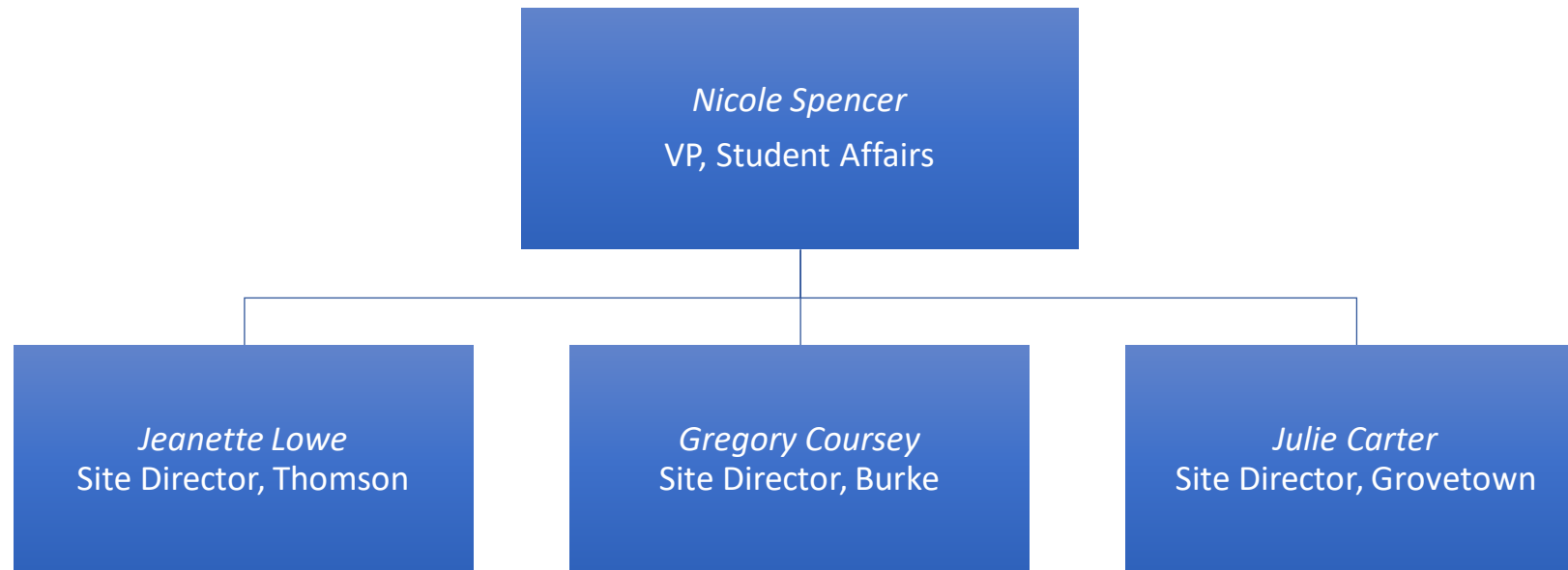
*Updated October 1, 2023*



This document is a graphic representation of the information for the Office of Aviation, Industrial and Engineering Technology. If you need this document in an accessible format, please see the [Accessible Organizational Chart](#).

# Off-Campus Instructional Site Operations

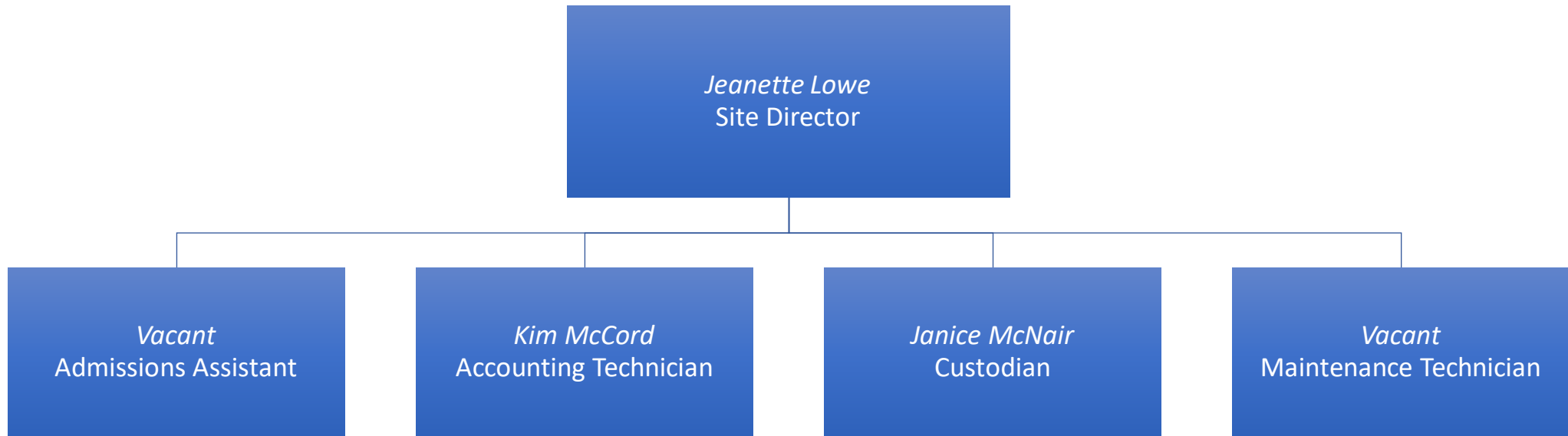
*Updated March 8, 2023*



This document is a graphic representation of the information for the Office of the Branch Campus Operations. If you need this document in an accessible format, please see the [Accessible Organizational Chart](#).

# Thomson/McDuffie County Site

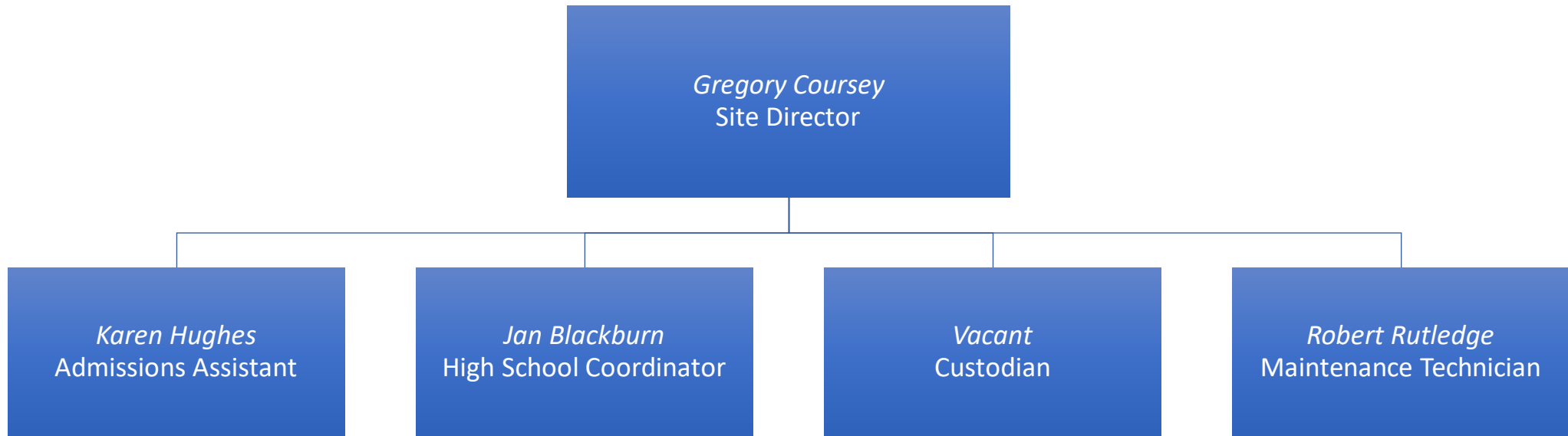
*Updated June 21, 2023*



This document is a graphic representation of the information for the Office of Thomson/McDuffie County Campus. If you need this document in an accessible format, please see the [Accessible Organizational Chart](#).

# Waynesboro/Burke County Site

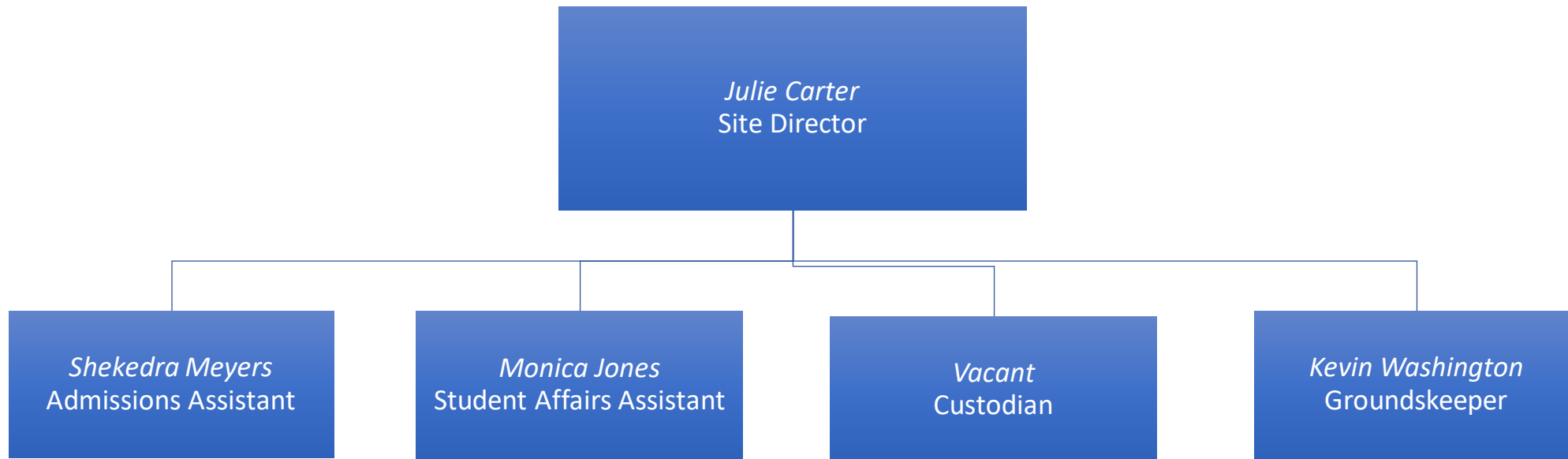
*Updated June 21, 2023*



This document is a graphic representation of the information for the Office of Waynesboro/Burke County Campus.  
If you need this document in an accessible format, please see the [Accessible Organizational Chart](#).

# Grovetown/Columbia County Site

*Updated June 21, 2023*



This document is a graphic representation of the information for the Office of Grovetown/Columbia County Campus. If you need this document in an accessible format, please see the [Accessible Organizational Chart](#).